

9757

Printer Management Utility

User's Manual

For use with Imagistics and Pitney Bowes DL460/550 copier/printers.

Welcome

Printer Management Utility is a device control utility program provided by the HTTP server built into the printer controller for Digital Copier. With a standard Web browser, this utility can be used as an interface for remote control of the Digital Copier.

Trademark Acknowledgements

Apple and Macintosh are registered trademarks of Apple Computer, Inc.

Ethernet is a registered trademark of Xerox Corporation.

Linux is a registered trademark of Linus Torvalds.

Microsoft, Windows, and Windows NT are registered trademarks of Microsoft Corporation.

Netscape Communications, the Netscape Communications logo, Netscape Navigator, Netscape Communicator, and Netscape are trademarks of Netscape Communications Corporation.

PCL is a registered trademark of Hewlett-Packard Company Limited.

PostScript is a registered trademark of Adobe Systems, Inc.

Solaris is a trademark of Sun Microsystems, Inc.

All other product names are trademarks or registered trademarks of their respective holders.

The information contained in this manual is subject to change without notice.

CONTENTS

1	<i>System Requirements</i>	1
2	<i>Access</i>	2
	2.1 Operation	2
	2.2 Logging In to the Admin Mode	2
3	<i>Screen Configuration</i>	4
4	<i>System Tab</i>	6
	4.1 Summary	6
	4.2 Details	7
	4.2.1 Input Tray	7
	4.2.2 Output Tray	8
	4.2.3 Hard Disk Status	9
	4.2.4 ROM Version	10
	4.2.5 Interface Information	11
	4.2.6 Consumable Status	12
	4.3 Preference	13
	4.4 Save Setting	14
	4.5 Online Assistance	16

5	<i>Job Tab</i>	18
5.1	Print Job Management	18
5.2	File Download	21
6	<i>Printer Tab</i>	22
6.1	Settings	22
6.1.1	Paper Handling	22
6.1.2	Page Layout	24
6.1.3	Printer Setting	25
6.2	Printer Front Panel	27
6.3	Test Print	28
6.4	Font Information	29
6.5	Printer Reset	30
6.6	Maintenance	31
6.7	Local Interface	32

7	<i>Scanner Tab</i>	33
7.1	Destinations	33
7.1.1	E-mail Destinations	33
7.1.1.1	Configuring an E-Mail Destination.....	34
7.1.2	File Destinations	35
7.1.2.1	Configuring a File Destination.....	36
7.2	SMTP & FTP Configuration	38
7.3	External Open Link	40
8	<i>Network Tab</i>	41
8.1	Summary	41
8.2	TCP/IP Configuration	42
8.3	NetWare Configuration	45
8.3.1	NetWare Setting	45
8.3.2	NetWare Status	48
8.4	AppleTalk Configuration	49
8.5	IPP Configuration	50
8.6	WINS Configuration	53
8.7	Reset	55
8.8	Maintenance	56
	<i>Appendix Status List</i>	57

1 System Requirements

The following items are required to use this utility.

Computer

- Software

Operating System	Web Browser
Windows 95/98/NT 4.0/2000	Internet Explorer 4 or higher Netscape Navigator 4 or higher
Macintosh System 7 or higher	Internet Explorer 4.5 or higher Netscape Navigator 4 or higher
Solaris 2.5.1/2.6/7 (2.7)	Netscape Navigator 4 or higher
Linux	Netscape Navigator 4 or higher

- NIC (Network Interface Card)
- Ethernet
- TCP/IP Protocol

Digital Copier

Printer Controller

2 Access

Printer Management Utility can be accessed directly from a Web browser.

1. Start the Web browser.
2. In the URL field, enter the IP address of the printer controller as shown below.

`http://<IP address of printer controller>/`

(Example) When the IP address of the printer controller is 192.9.200.200:

`http://192.9.200.200/`

3. This causes Printer Management Utility screen to appear.

2.1 Operation

Printer Management Utility operation is identical to that for Internet Web pages. Clicking a hot link jumps to the link destination, and the **Back** and **Forward** buttons scroll through pages backwards and forward.

2.2 Logging In to the Admin Mode

After you log in to Printer Management Utility in the Admin Mode, you can change the configuration of the Digital Copier settings.

1. Type the administrator password into the **Admin Password** box. The initial default administrator password is **sysadm**. See 4.3 – *Preference* for information about how to change the password.
2. Click the **Log-in** button to log in to the Admin Mode.
3. When you want to log out, click the **Log-out** button.

Note

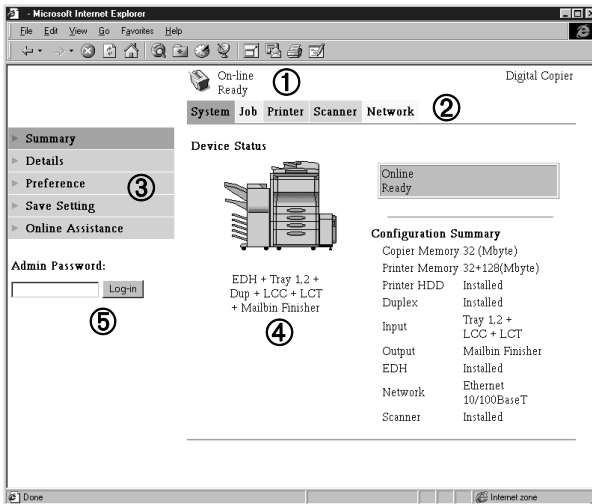
- Log out is performed automatically if no operation is performed for more than 10 minutes.
- On the **Network** tab, a password input text box appears on each setting screen. You must be able to input the correct password in order to change **Network** tab settings. The password you should input here is the same as the Admin Password you input on other tabs.

3 Screen Configuration

The configuration of the Printer Management Utility screen is shown below.

Note

- Screen images shown in this manual may differ slightly from actual ones. Also note that specifications are subject to change without prior notice.



① Status Display

The current status of the Digital Copier is indicated by both icons and text. The message **Ready** appears when the Digital Copier is operating normally. For full details about screen contents, see *Appendix – Status List*.

② **Tabs**

Use the tabs to select the category of items you want to display. See the following sections of this document for detailed information about each tab.

③ **Menus**

Use the menus to select information or setting items. The menus that appear depend on the currently selected tab. See the following sections of this document for detailed information about each menu.

④ **Information and Settings Display**

This display shows information or settings in accordance with the selected menu item.

⑤ **Admin Password**

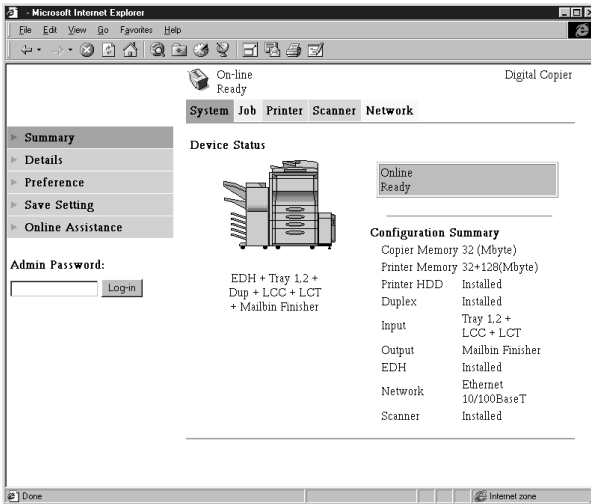
Inputting the admin password provides access to the Admin Mode. See 2.2 – *Logging In to the Admin Mode* for more information.

4 System Tab

The **System** tab shows information about and settings for the Digital Copier system configuration.

4.1 Summary

This screen is the initial screen when you access <http://<IP address of printer controller>> with your Web browser. You can also display it by clicking the **Summary** menu on the **System** tab. It shows the current Digital Copier system configuration.



Device Status This area uses graphics and text to show the configuration of options installed on the Digital Copier.

Operational Panel Display

This area shows the printer controller message display. Messages are the same as the Status Display messages that appear in the upper part of the window.

Configuration Summary

This area shows an overview of the current Digital Copier system configuration.

4.2 Details

Sub-menus appear when you click the **Details** menu on the **System** tab. Clicking a sub-menu under the **Details** menu displays information about the applicable unit.

4.2.1 Input Tray

This screen appears when you click the **Input Tray** sub-menu under the **Details** menu. It shows the configuration of all the Input Trays installed on the Digital Copier.

The screenshot shows a web browser window titled "Microsoft Internet Explorer" displaying the "Digital Copier" configuration page. The "System" tab is selected, and the "Input Tray" sub-menu is expanded. The main content area shows a table of input trays with the following data:

Tray	Paper Size	Media Type	Paper Direction	Capacity	Paper
Tray1	Letter	Plain Paper	Long Edge Feed	500	100 %
Tray2	A4	Plain Paper	Short Edge Feed	500	80 %
Manual Feed	Custom Size X: 432 mm Y: 297 mm	Plain Paper	Short Edge Feed	50	0 %
LCC	A4	Plain Paper	Long Edge Feed	2500	0 %
LCT	A4	Plain Paper	Long Edge Feed	3000	50 %

Below the table, there is an "Admin Password:" field with a "Log-in" button.

Tray Tray name

Paper Size Size of paper loaded in the tray

Media Type Type of media loaded in the tray

Paper Direction
Orientation of paper loaded in the tray

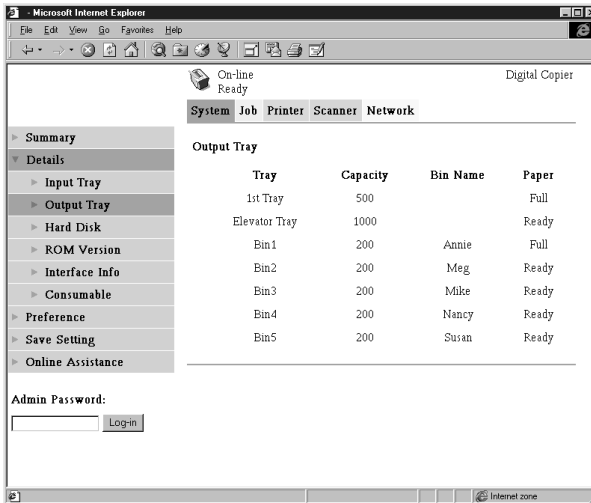
4 System Tab

Capacity Maximum number of sheets that can be loaded in the tray

Paper Amount of paper remaining in the tray (%)

4.2.2 Output Tray

This screen appears when you click the **Output Tray** sub-menu under the **Details** menu. It shows the configuration of all the Output Trays installed on the Digital Copier.



Tray Tray name

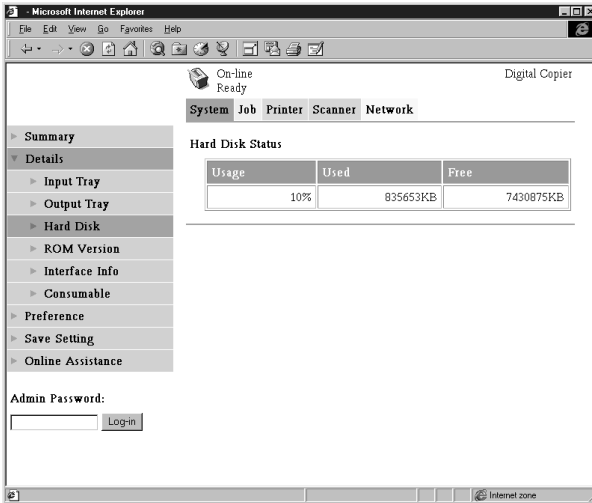
Capacity Maximum number of sheets the tray can hold

Bin Name When the mail bin finisher is installed, owner name assigned to each bin (See 6.1.1 – *Paper Handling* for information about how to specify a bin name.)

Paper Tray status (Shows **Full** when the tray is unable to receive any more paper, and **Ready** when it is.)

4.2.3 Hard Disk Status

This screen appears when you click the **Hard Disk** sub-menu under the **Details** menu. It shows the status of the hard disk installed on the printer controller. This information is not displayed when there is no hard disk installed on the printer controller.

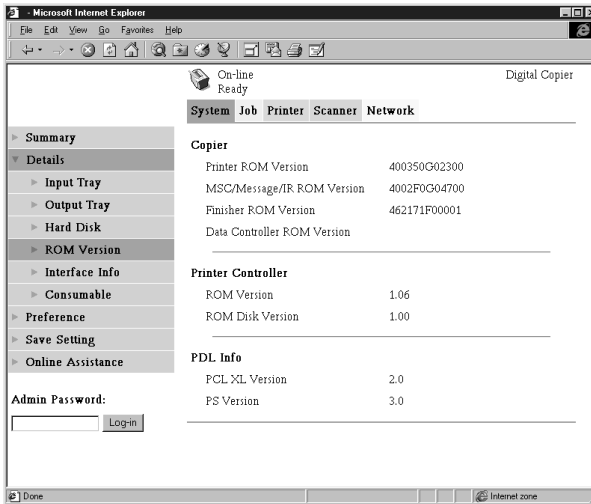


Usage	Percent of hard disk space used (%)
Used	Amount of hard disk space used (KB)
Free	Amount of hard disk space free (KB)

4 System Tab

4.2.4 ROM Version

This screen appears when you click the **ROM Version** sub-menu under the **Details** menu. It shows information about the on-board memory of the Digital Copier and the printer controller.



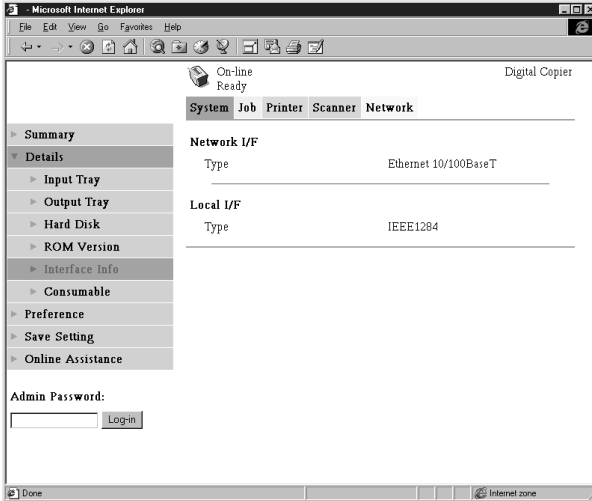
Copier Version of ROM installed on the Digital Copier

Printer Controller
Version of firmware installed on the printer controller

PDL Info Version of printer control codes (PCL or PostScript) used by the printer controller

4.2.5 Interface Information

This screen appears when you click the **Interface Info** sub-menu under the **Details** menu. It shows information about the printer controller interface.



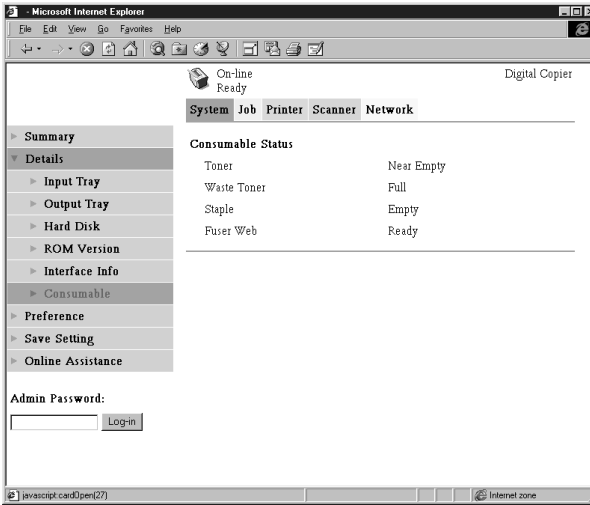
Network I/F Network interface type

Local I/F Local port type

4 System Tab

4.2.6 Consumable Status

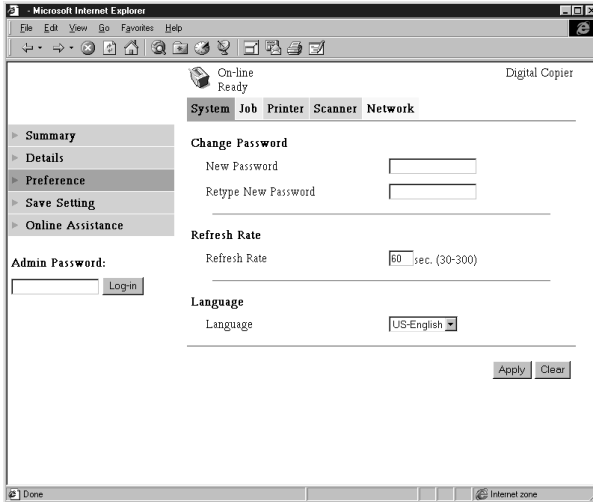
This screen appears when you click the **Consumable** sub-menu under the **Details** menu. It shows the current status of Digital Copier consumables. For information about consumables, see the *Digital Copier Operator's Manual*.



Toner	Remaining toner
Waste Toner	Remaining waste toner bottle capacity
Staple	Remaining staples
Fuser Web	Remaining oil in fuser web unit

4.3 Preference

This screen appears when you click the **Preference** menu on the **System** tab. It lets you make changes to the Printer Management Utility environment.



Change Password

When changing the password, type the new password into the **New Password** text box. Type the same password into the **Retype New Password** text box for confirmation. The password must be at least four characters and can be up to eight characters long.

Refresh Rate Type in a value to specify the number of seconds between screen refreshes. You can input a value from 30 to 300 seconds. The default setting is 60 seconds.

Language Select the screen language you want to use for Printer Management Utility.

- US-English
- UK-English

4 System Tab

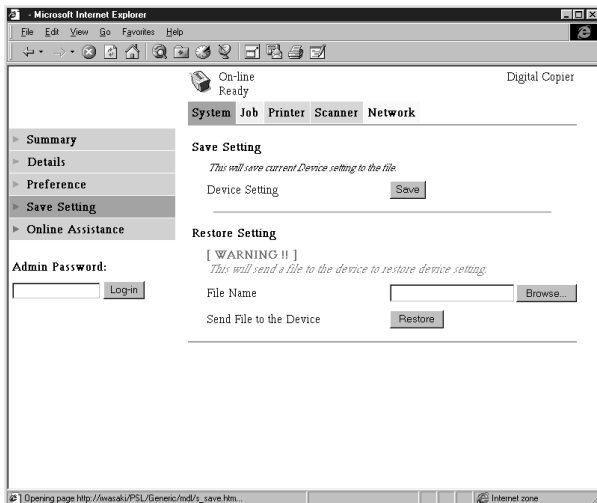
- German
- French
- Italian
- Dutch
- Spanish
- Danish
- Czech

Apply Button Click this button to apply any settings you have input or selected up to this point.

Clear Button Click this button to cancel any settings you have input or selected up to this point.

4.4 Save Setting

This screen appears when you click the **Save Setting** menu on the **System** tab. You can use the screen that appears to save the Digital Copier setup to a file. Note that only settings you can make with Printer Management Utility are saved to the file. Saved setups can be recalled to set up the Digital Copier when required.



Save Setting Section

Device Setting Click the **Save** button to display a dialog box for saving the Digital Copier setup. Specify the destination folder and file name, and then click **OK** on the dialog box to save the setup in the folder. The default setup file name is **Digital Copier_PR.F.bin**.

Restore Setting Section

File Name Type in the full path name to the file that contains the setup you want to restore. You can also click the **Browse** button to display a dialog box for selecting the file.

Send File to the Device

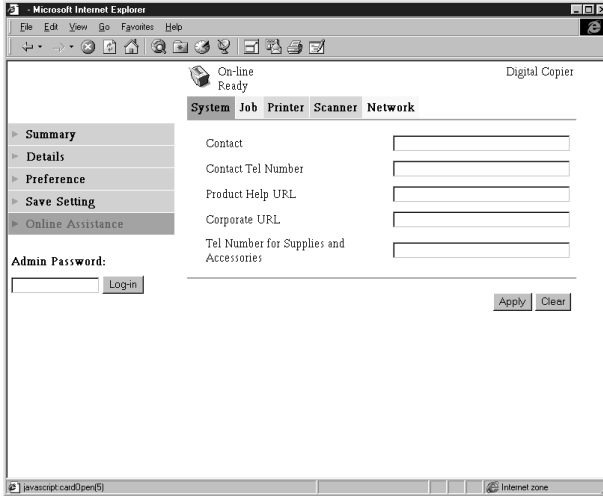
Clicking the **Restore** button sends the setup file specified in **File Name** and changes the settings of the Digital Copier accordingly.

Important!

- Clicking the **Restore** button changes the setup of the Digital Copier in accordance with the specified setup file. Make sure you select the correct file that contains the setup you want before clicking **Restore**.

4.5 Online Assistance

This screen appears when you click the **Online Assistance** menu on the **System** tab. It shows information and lets you make settings related to product support.



Contact Type in the name of your product support counter.

Contact Tel Number

Type in the phone number of your product support counter.

Product Help URL

Type in the URL of your product information Website. Clicking the **Product Help URL** jumps to the Website you specify here.

Corporate URL

Type in the URL to the manufacture's Website. Clicking **Corporate URL** jumps to the Website you specify here.

Tel Number for Supplies and Accessories

Type in the telephone number of the support counter you need to contact to order consumables and accessories.

Apply Button Click this button to apply any settings you have input up to this point.

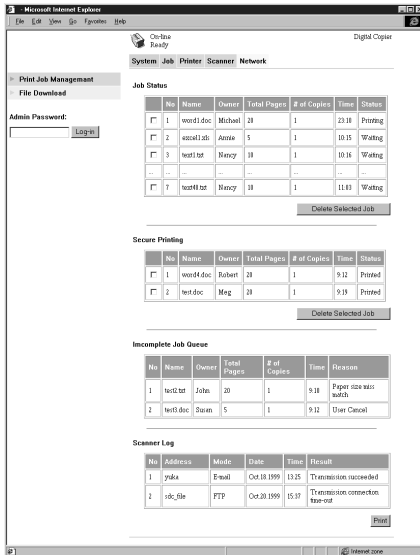
Clear Button Click this button to cancel any settings you have input up to this point.

5 Job Tab

You can use the **Job** tab for managing print jobs sent to the Digital Copier from clients, and for sending files directly from clients for printing.

5.1 Print Job Management

This screen appears when you click the **Print Job Management** menu on the **Job** tab. Use this screen to manage print jobs sent from clients to the Digital Copier.



Job Status Section

This section lists the jobs sent to the Digital Copier.

- No** Job number
- Name** Print data file name
- Owner** Name of user who sent the job

Total Pages	Total number of pages in the job
# of Copies	Number of copies in the job
Time	Time job was placed in the queue
Status	Job processing status

Delete Selected Job Button

Clicking this button deletes all jobs who have check marks in the leftmost column.

Secure Printing Section

This section lists confidential print jobs. When printing a secure print job, the same password that was input when the print command was executed on the client must be input on the printer.

No	Job number
Name	Print data file name
Owner	Name of user who sent the job
Total Pages	Total number of pages in the job
# of Copies	Number of copies in the job
Time	Time job was placed in the queue
Status	Job processing status

Delete Selected Job Button

Clicking this button deletes all jobs that have check marks in the leftmost column.

Incomplete Job Queue Section

This section lists jobs for which an alternate process was performed or which were removed from the queue because normal print processing was impossible for some reason.

No	Job number
Name	Print data file name
Owner	Name of user who sent the job

5 Job Tab

Total Pages	Total number of pages in the job
# of Copies	Number of copies in the job
Time	Time alternate process was performed or job was removed
Reason	Reason normal print processing was impossible

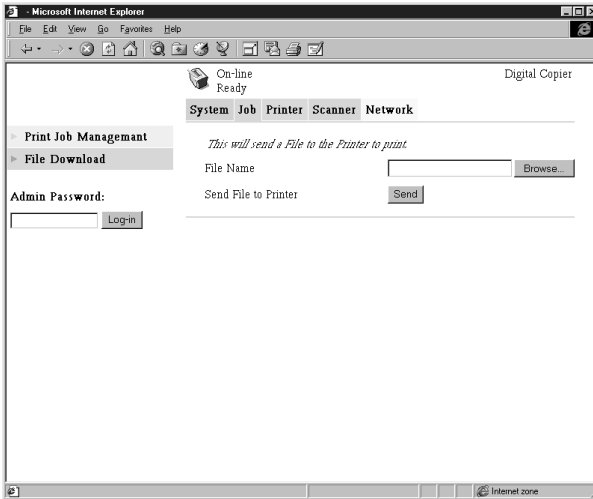
Scanner Log Section

This section shows a log of scanner data communication.

No	Job number
Address	Name associated with addresses
Mode	Communication mode (e-mail or FTP)
Date	Communication date
Time	Send start time
Result	Communication result
Print Button	Click to print a single scanner communication log sheet.

5.2 File Download

This screen appears when you click the **File Download** menu on the **Job** tab. You can use this screen to send a file directly from a client to the Digital Copier.



File Name Type in the full path to the file you want to print. You can also click the **Browse** button to display a dialog box for selecting the file.

Send File to Printer

Clicking the **Send** button sends the file specified by **File Name** to the Digital Copier and prints it.

Note

- Note that File Download will not print a Macintosh text file correctly.

6 Printer Tab

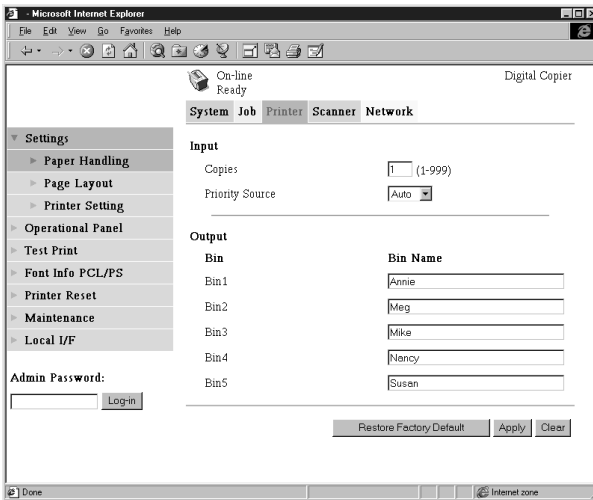
The **Printer** tab shows information and settings for printing on the Digital Copier.

6.1 Settings

Sub-menus appear when you click the **Settings** menu on the **Printer** tab. Click the sub-menus to display screens for changing the printer setup.

6.1.1 Paper Handling

This screen appears when you click the **Paper Handling** sub-menu under the **Settings** menu. Use this screen to configure the input tray and output bins.



Input Section

Copies

Input a value indicating the number of copies.

Priority Source

Specify the default input tray. The menu shows only the trays that are currently available for selection.

Output Section

Bin Bin names when mail bin manager is installed

Bin Name Type in the name of the user of each bin. You can input up to 32 characters.

Restore Factory Default Button

Click this button to return settings to their initial factory defaults.

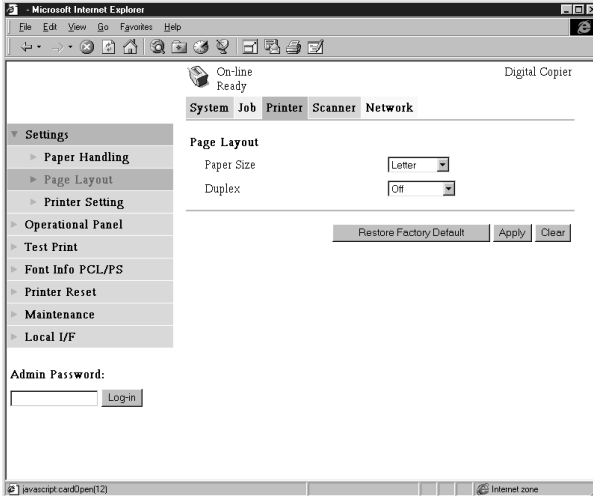
Apply Button Click this button to apply any settings you have input up to this point.

Clear Button Click this button to cancel any settings you have input up to this point.

6 Printer Tab

6.1.2 Page Layout

This screen appears when you click the **Page Layout** sub-menu under the **Settings** menu. Use this screen to configure the print document page layout.



Paper Size Select the page layout paper size to be used when printing is performed without a paper size specified by the client.

Duplex Use this setting to turn two-side printing on and off, and to specify either long-edge binding or short-edge binding.

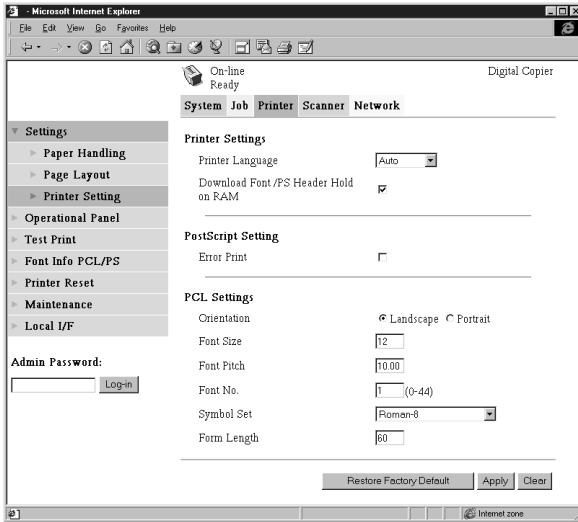
Restore Factory Default Button Click this button to return settings to their initial factory defaults.

Apply Button Click this button to apply any settings you have input up to this point.

Clear Button Click this button to cancel any settings you have input up to this point.

6.1.3 Printer Setting

This screen appears when you click the **Printer Setting** sub-menu under the **Settings** menu. Use this screen to configure the printer controller.



Printer Settings Section

Printer Language

Select the printer control code type.

Download Font/PS Header Hold on RAM

When the box next to this option is checked, downloaded fonts and PostScript header remain in printer controller RAM as long as power is supplied to the printer controller. This option appears after printer controller memory has been increased.

6 *Printer Tab*

PostScript Settings Section

Error Print When the box next to this option is checked, an error message is printed whenever a PostScript error is generated.

PCL Settings Section

Orientation Specify the orientation of the printed page.

Font Size Type in a value specifying the size in points for proportional fonts.

Pitch Type in a value specifying the number of characters per horizontal inch for uniform space fonts.

Font No. Type in a font number.

Symbol Set Select the symbol set you want to use with the font. The default symbol set is used if the symbol set you select is currently not available.

Form Length Type in a value specifying the number of lines per page.

Restore Factory Default Button

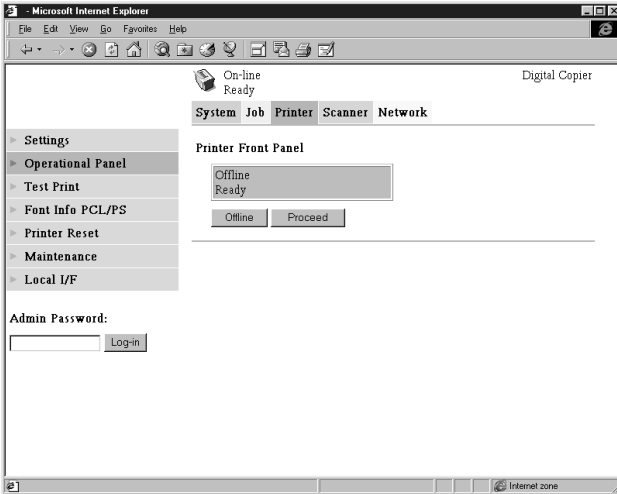
Click this button to return settings to their initial factory defaults.

Apply Button Click this button to apply any settings you have input up to this point.

Clear Button Click this button to cancel any settings you have input up to this point.

6.2 Printer Front Panel

This screen appears when you click the **Operational Panel** menu on the **Printer** tab. It provides on-screen emulation of the printer controller's operational panel.



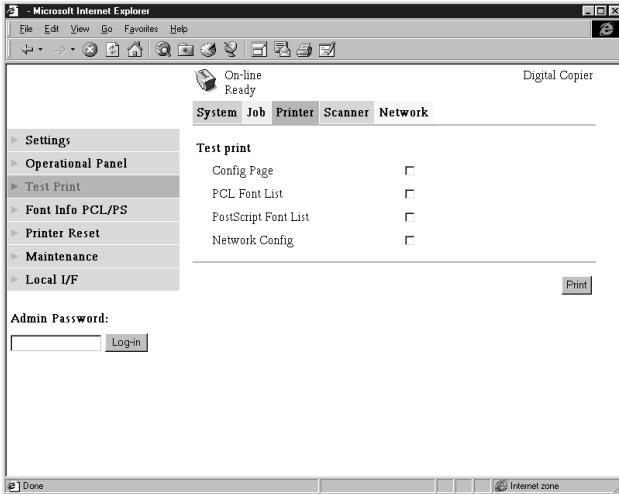
Display This area shows the printer controller message display. Messages are the same as the Status Display messages that appear in the upper part of the window.

Online Button Toggles the printer controller network connection on line and off line

Proceed Button Click this button to force printing of the job whose data is still in the controller.

6.3 Test Print

This screen appears when you click the **Test Print** menu on the **Printer** tab. It lets you select a test print page and execute a test print operation.



Config Page Insert a check mark into the box to print the printer controller setup page.

PCL Font List Insert a check mark into the box to print the PCL font list.

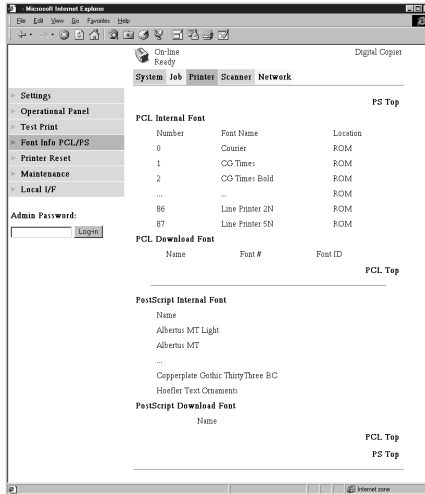
PostScript Font List
Insert a check mark into the box to print the PostScript font list.

Network Config
Insert a check mark into the box to print the network configuration.

Print Button Click this button to execute a test print operation.

6.4 Font Information

This screen appears when you click the **Font Info** menu on the **Printer** tab. It shows a list of PCL fonts and PostScript fonts built into the printer controller.



PCL Internal Font

PCL fonts built into the printer controller

PCL Download Font

PCL fonts downloaded from the computer to the printer controller

PostScript Font

PostScript fonts built into the printer controller

PostScript Download Font

PostScript fonts downloaded from the computer to the printer controller

Font Name Font name

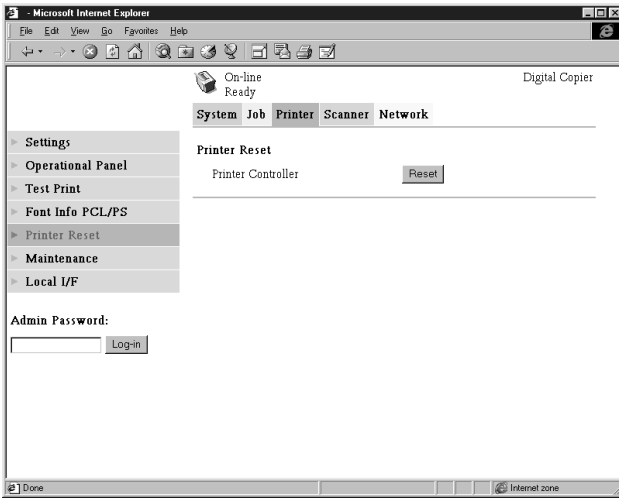
Font ID Unique control number for each downloaded font

Font # Downloaded font number

Location Storage location of the font (ROM, RAM, HDD)

6.5 Printer Reset

This screen appears when you click the **Printer Reset** menu on the **Printer** tab. Use this screen to reset the printer controller.

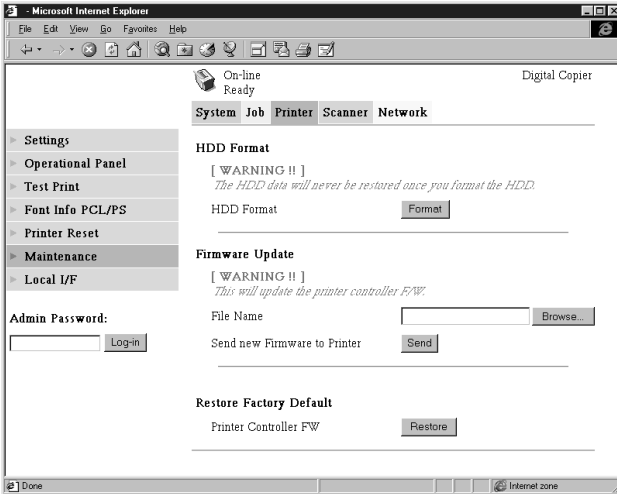


Printer Controller

Clicking the **Reset** button displays a confirmation message asking if you want to perform the reset. Click **Yes** to reset the printer controller. Applicable users are informed if a reset is executed while a print operation or data receive operation is in progress.

6.6 Maintenance

This screen appears when you click the **Maintenance** menu on the **Printer** tab. Use this screen to format the hard disk drive and to update the printer controller firmware.



HDD Format Section

HDD Format Use this section to format the hard disk drive. Clicking the **Format** button displays a confirmation screen. Click **Yes** to format the hard disk.

Firmware Update Section

File Name Type in the full path to the firmware definition file you want to download to the printer controller. You can also click the **Browse** button to display a dialog box for selecting the file.

Send new Firmware to Printer

Click the **Send** button to download the firmware to the printer controller.

6 Printer Tab

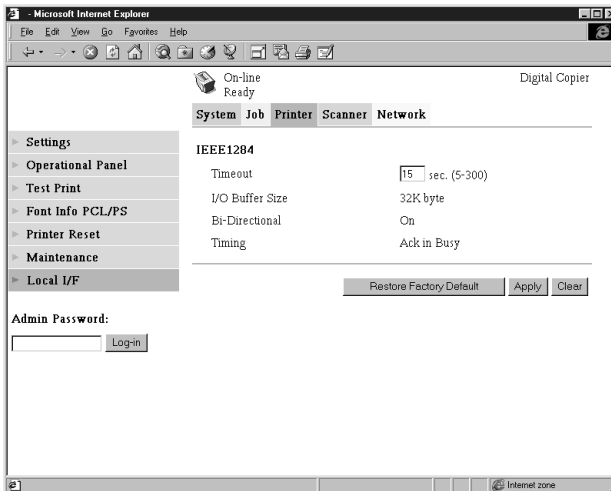
Restore Factory Default Section

Printer Controller FW

Use this section to return printer controller settings to their initial factory defaults. Clicking the **Restore** button displays a confirmation screen. Click the **Yes** button to restore the initial factory default settings.

6.7 Local Interface

This screen appears when you click the **Local I/F** menu on the **Printer** tab. Use this screen to view and configure local interface information.



Timeout Input a value specifying how much time, in seconds, should be allowed to pass after data is received through the parallel port before it is decided that a job is finished.

I/O Buffer Size I/O buffer size

Bi-Directional Bi-directional communication setting

Timing Printer data read timing

7 Scanner Tab

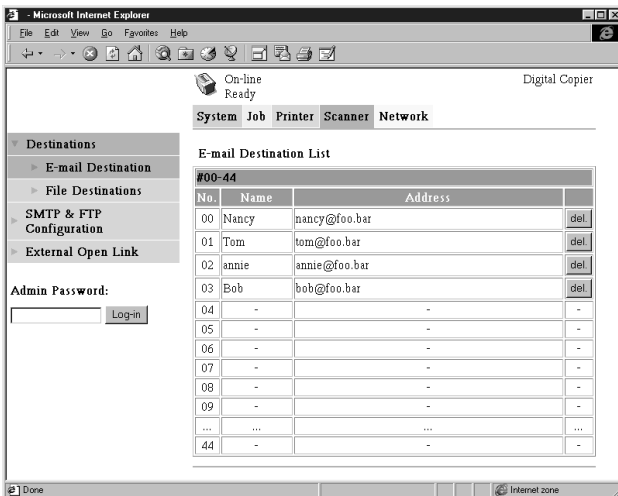
The **Scanner** tab contains settings for configuration of the Digital Copier scanner function. For details about the scanner function, see the separate *Digital Copier Scanner Mode Operator's Manual*.

7.1 Destinations

Sub-menus appear when you click the **Destinations** menu on the **Scanner** tab. Use the sub-menus to specify the destination of the scanned data.

7.1.1 E-mail Destinations

This screen appears when you click the **E-mail Destinations** sub-menu under the **Destination** menu. It lists the E-mail Destinations that are currently registered.



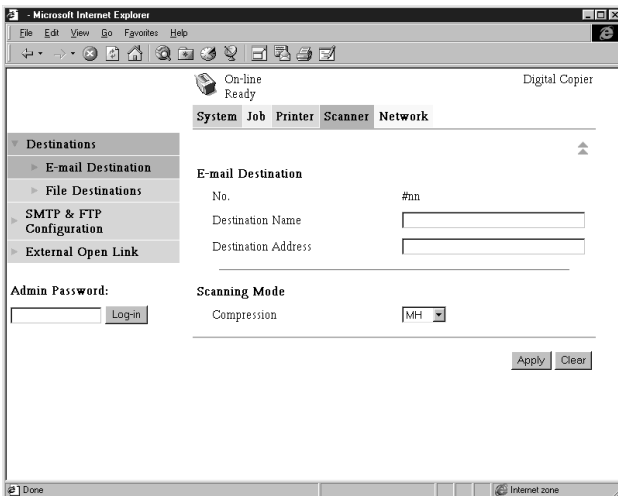
- Clicking an unused cell inside the E-mail Destination List displays a screen for registering a new E-mail Destination. See *7.1.1.1 – Configuring an E-Mail Destination* for more information.

7 Scanner Tab

- Clicking an existing E-mail Destination number or name displays a screen showing the details of that destination. See 7.1.1.1 – *Configuring an E-Mail Destination* for more information.
- To delete an E-mail Destination, click the **del** button next to the destination you want to delete.

7.1.1.1 Configuring an E-Mail Destination

This section describes the settings you can make on the screens for registering a new E-mail destination and for changing the configuration of an E-mail destination.



E-mail Destination Section

No. E-mail Destination number

Destination Name

Type in the name of the E-mail Destination. You can input up to 72 characters.

Destination Address

Type in the e-mail address of the destination. You can input up to 72 characters.

Scanning Mode Section

Compression Select the compression method to be used when scanned data is sent as an e-mail attachment.

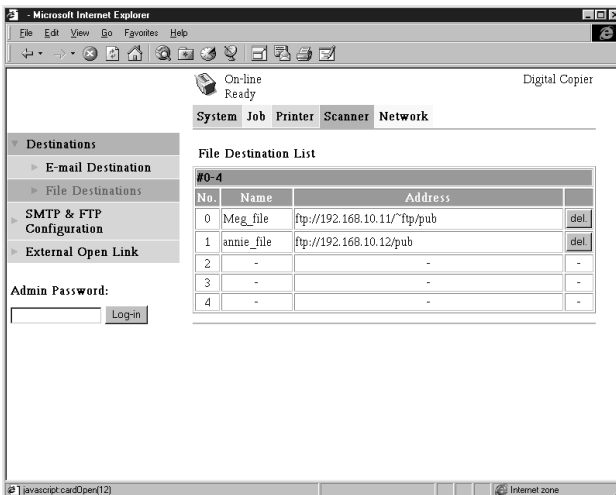
Apply Button Click this button to apply any settings you have input up to this point.

Clear Button Click this button to cancel any settings you have input up to this point.

▲ Icon Click to return to the previous screen.

7.1.2 File Destinations

This screen appears when you click the **File Destinations** sub-menu under the **Destination** menu. It lists the File Destinations that are currently registered.



- Clicking an unused cell inside the File Destination List displays a screen for registering a new File Destination. See 7.1.2.1 – *Configuring a File Destination* for more information.
- Clicking an existing File Destination number or name displays a

7 Scanner Tab

screen showing the details of that destination. See *7.1.2.1 – Configuring a File Destination* for more information.

- To delete an File Destination, click the **del** button next to the destination you want to delete.

7.1.2.1 Configuring a File Destination

This section describes the settings you can make on the screens for registering a new file destination and for changing the configuration of a file destination.

Microsoft Internet Explorer
File Edit View Go Favorites Help

On-line Ready Digital Copier

System Job Printer Scanner Network

Destinations
 Email Destination
 File Destinations
 SMTP & FTP Configuration
 External Open Link

Admin Password:
[] Login

File Destination

File Destination No. # []
Destination Name []
Ftp Server Address [] [] [] []
Directory []
Use Proxy
Remote Port Number 21 []

Account information

Anonymous
 Private Site
 User Name []
 Password []
 Confirm []

Scanning Mode

Compression MH [v]

Apply Clear

Done Internet zone

File Destination Section

File Destination No.

File Destination number

Destination Name

Type in the name of the File Destination. You can input up to 72 characters.

FTP Server Address

Type in the IP address of the FTP site.

- Directory** Type in the directory of the FTP site where the scan data is located. You can input up to 128 characters.
- Use Proxy** Put a check mark into this box to enable access of the FTP site via a proxy.
- Remote Port Number**
When not using a proxy, input the FTP port number. You can input a value from 1 to 65535.

Account Information Section

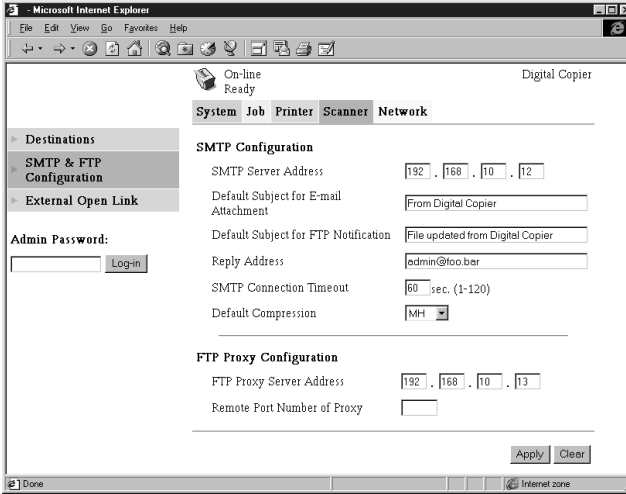
- Anonymous** Select this option to enable log in to the FTP site using an anonymous account.
- Private Site** Make the following settings for non-anonymous account log in on the FTP site.
- **User Name:** Type in the user name for logging in to the FTP site. You can input up to 64 characters.
 - **Password:** Type in the password for logging in to the FTP site. You can input up to 40 characters.
 - **Confirm:** Re-input the password to confirm it.

Scanning Mode Section

- Compression** Select the compression method to be used when scanned data is send by FTP.
- Apply Button** Click this button to apply any settings you have input up to this point.
- Clear Button** Click this button to cancel any settings you have input up to this point.
- ▲ Icon** Click to return to the previous screen.
-

7.2 SMTP & FTP Configuration

This screen appears when you click **SMTP & FTP Configuration** on the **Scanner** tab. Use this screen to make SMTP and FTP settings.



SMTP Configuration Section

Important!

- You must provide information for the **SMTP Server Address** and **Reply Address** when you are using the Send to E-mail function. E-mail cannot be sent if these settings are left blank.

SMTP Server Address

Type in the IP address of the SMTP server.

Default Subject for E-mail Attachment

Type in the default subject when distributing scanner data as e-mail attachments.

Default Subject for FTP Notification

Type in the default subject when informing by e-mail the URL of the FTP site where scan data is left.

Reply Address Type in the mail address for a mail replay showing the error message when a send error is generated.

SMTP Connection Timeout

Input the SMTP server connection timeout in seconds. You can input a value from 1 to 120 seconds.

Default Compression

Select the default compression method to be used when distributing scanned data as direct mail.

FTP Proxy Configuration Section

FTP Proxy Server Address

Type in the IP address of the FTP proxy server.

Remote Port Number of Proxy

Type in the proxy port number. You can input a value from 1 to 65535.

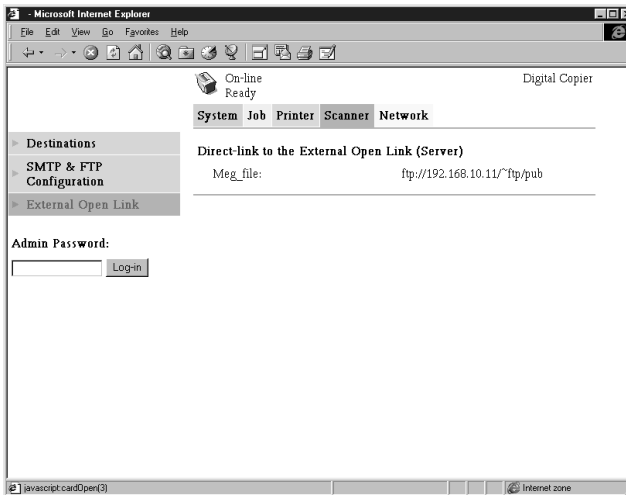
7 Scanner Tab

Apply Button Click this button to apply any settings you have input up to this point.

Clear Button Click this button to cancel any settings you have input up to this point.

7.3 External Open Link

This screen appears when you click the **External Open Link** menu on the **Scanner** tab. Use this page to view information about linking to an external server.



Direct-link to the External Open Link (Server)

This area lists the FTP sites registered within the File Destination List that allow anonymous log in. See 7.1.2 – *File Destinations* for information about registration to the File Destination List. Clicking an FTP site registered destination name or URL accesses the FTP site using the following account.

- User Name: anonymous
- Password: guest

8 Network Tab

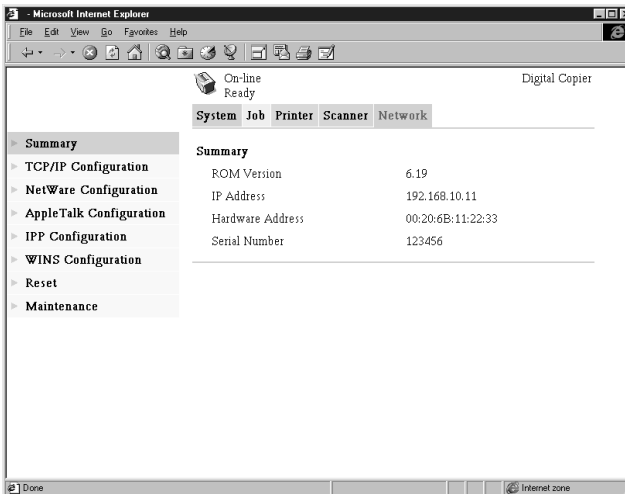
Use the **Network** tab for configuring the Printer controller network interface.

Note

- On the **Network** tab, you must type the password into the **Password** box that appears on the setting screen you select on the menu. Note, however, that you need to input the password on the **Network** tab only once per session. After you input the password, the **Password** box does not appear any more on other **Network** tab setting screens during the current session.

8.1 Summary

This screen appears when you click the **Summary** menu on the **Network** tab. Use this screen to view a summary of the network interface card.



ROM Version Network interface card firmware version

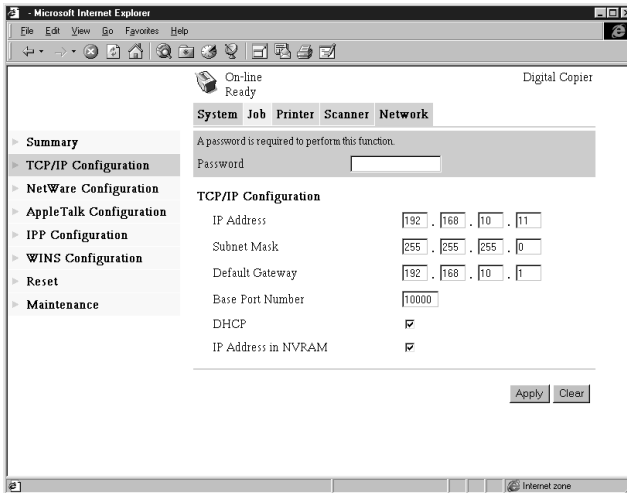
IP Address IP address assigned to the current network interface card

Hardware Address MAC address of network interface card

Serial Number Serial number of network interface card

8.2 TCP/IP Configuration

This screen appears when you click the **TCP/IP Configuration** menu on the **Network** tab. It lets you change a number of Network Interface Card TCP/IP settings.



Password Input the password assigned to the Network Interface Card. The initial factory default is **sysadm**. Clicking the **Apply** button after inputting the wrong password displays a password error message without changing the settings.

IP Address Input the IP address you want to assign to the Network Interface Card.

Subnet Mask Input the network subnet mask.

Default Gateway

If the network has a router, input the IP address of the router.

Base Port Number

Type in the base port number for RAW port printing. A port number that is one greater than the base port number you specify here is used for actual printing.

Example: Specifying a base port number of 10000 results in an actual port number of 10001.

DHCP

Checking this option sends a DHCP (Dynamic Host Configuration Protocol) request whenever the Network Interface Card is powered up. When there is a DHCP server on the network, the Network Interface Card can obtain IP parameters automatically from the server at power up.

IP Address in NVRAM

When this option is checked, the Network Interface Card uses the IP address stored in NVRAM when the card is powered up.

Apply Button Click this button to apply any settings you have input up to this point.

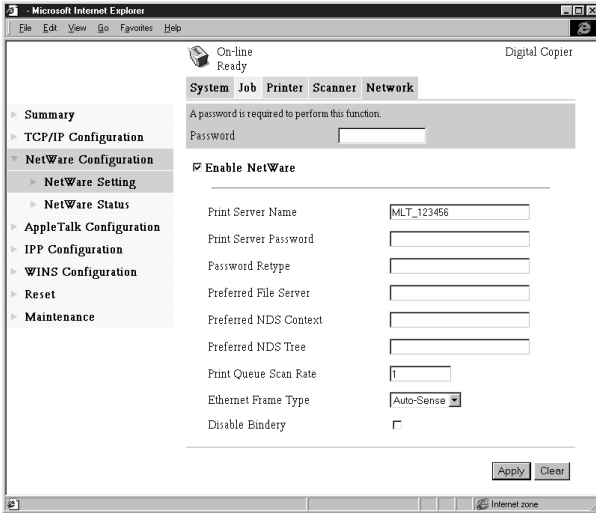
Clear Button Click this button to cancel any settings you have input up to this point.

Note

- Use only IP parameters that have been specified or approved by your network administrator.
- The Network Interface Card does not send DHCP requests when DHCP is disabled. If there is no IP address assigned to the Network Interface Card or if **IP Address in NVRAM** is turned off, the Network Interface Card sends a BOOTP request.
- A DHCP request is sent when the Network Interface Card is reset or powered up (while DHCP is enabled and no IP address assigned to the Network Interface Card or if **IP Address in NVRAM** is turned off).
- When DHCP is enabled, an IP address is assigned to the Network Interface Card, and **IP Address in NVRAM** is turned on, the Network Interface Card uses the IP address stored in NVRAM. In this case, the Network Interface Card does not send a DHCP request.

8.3 NetWare Configuration

Sub-menus appear when you click the **NetWare Configuration** menu on the **Network** tab. Use the sub-menus to display and configure the network interface card settings for NetWare printing.



8.3.1 NetWare Setting

This screen appears when you click the **NetWare Setting** sub-menu under the **NetWare Configuration** menu. It lets you change a number of NetWare environment settings.

Password Input the password assigned to the Network Interface Card. The initial factory default is **sysadm**. Clicking the **Apply** button after inputting the wrong password displays a password error message without changing the settings.

Enable NetWare Check this option to enable IPX/SPX on the Network Interface Card. The NetWare

environment is disabled while this option is unchecked.

Print Server Name

Input the print server name you want. The default print server name when this field is left blank is: MLT_<*Network Interface Card serial number*>.

Print Server Password

When you want to use a password for logging into the Network Interface Card, type the password you want to specify into the field. Type the same password into the **Password Retype** field for confirmation. The password you specify must be the same as the bindery and NDS-based print server password.

Preferred File Server

Type in the name of the preferred file server when setting up for bindery and bindery emulation. See the *Network Interface Card Operator's Manual* for more information about the preferred file server. The print server must always be configured on a preferred file server. Failure to properly configure the preferred file server can cause incorrect printing results.

Preferred NDS Context

Input the print server for NDS operation. In this case, always input the entire context, without inputting a period at the beginning of the path. Example: ou=standard.ou=organization_1

Preferred NDS Tree

Input the print server for NDS operation. If you do not know what the tree is, input **whoami** at the DOS command line.

Print Queue Scan Rate

Specify the print server's queue scan interval in seconds. The default scan rate is 1 second.

Ethernet Frame Type

Specify the frame type being used by Ethernet. Normally, the frame type being used by NetWare is determined by monitoring the Network Interface Card. When the frame type is determined, it is assumed that the Network Interface Card is the same frame type. Once you select a frame type, Network Interface Card operation supports that NetWare frame type only.

Frame type monitoring normally starts from IEEE 802.3, and then moves to Ethernet II and then 802.3 SNAP. When the network you are on uses multiple Ethernet frame types, use the pull-down menu to select the frame type to be recognized.

Disable Bindery

Check this option to disable bindery when only the NDS mode is used. When bindery is disabled, the Network Interface Card no longer supports the print server on the bindery file server.

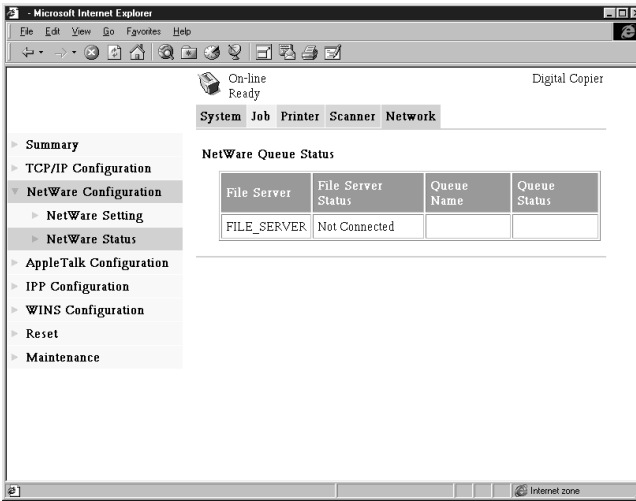
Apply Button Click this button to apply any settings you have input up to this point.

Clear Button Click this button to cancel any settings you have input up to this point.

The settings you make on this screen do not become valid until you reset the Network Interface Card or power it down and then back up again. See 8.7 – *Reset* for more information on resetting the Network Interface Card.

8.3.2 NetWare Status

This screen appears when you click the **NetWare Status** sub-menu under the **NetWare Configuration** menu. Use this screen to check the status of the file server and queue to which the Network Interface Card is attached.



File Server Name of the NetWare server to which the printer is currently attached

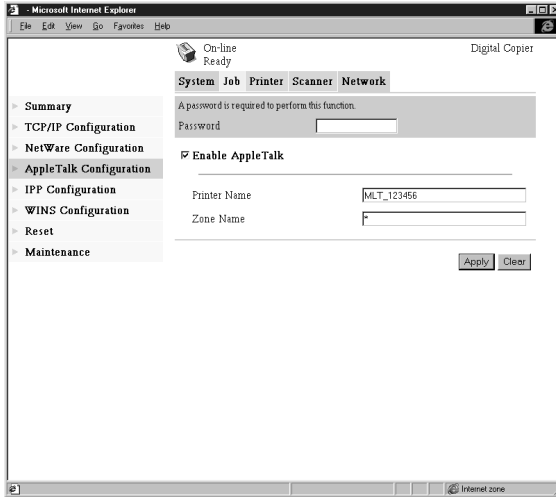
File Server Status Status of connection to NetWare server

Queue Name Name of NetWare print queue to which the printer is currently allocated

Queue Status NetWare print queue status

8.4 AppleTalk Configuration

This screen appears when you click the **AppleTalk Configuration** menu on the **Network** tab. It lets you change a number of AppleTalk environment settings.



Password Input the password assigned to the Network Interface Card. The initial factory default is **sysadm**. Clicking the **Apply** button after inputting the wrong password displays a password error message without changing the settings.

Enable AppleTalk Check this option to enable AppleTalk on the Network Interface Card.

Printer Name Input the printer name you want.

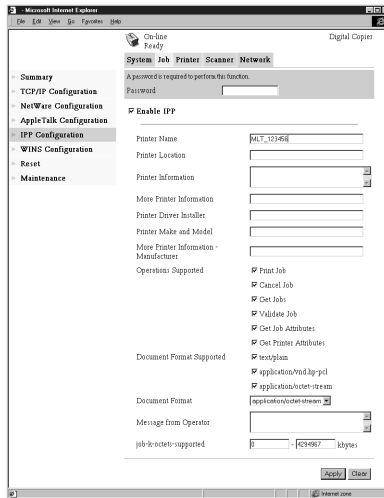
Zone Name Input the name of AppleTalk zone in which you want to locate the printer.

Apply Button Click this button to apply any settings you have input up to this point.

Clear Button Click this button to cancel any settings you have input up to this point.

8.5 IPP Configuration

This screen appears when you click the **IPP Configuration** menu on the **Network** tab. It lets you change Internet Printing Protocol (IPP) settings. You can configure the printer functions that are controlled by IPP and the printer information that can be seen from IPP clients.



Note

- Standard access for IPP printing is:
`http://<IP Address>:631/nic/Print`
- For details about IPP printing, see the *Network Interface Card Operator's Manual*.

Password Input the password assigned to the Network Interface Card. The initial factory default is **sysadm**. Clicking the **Apply** button after inputting

the wrong password displays a password error message without changing the settings.

Enable IPP Check this option to enable IPP on the Network Interface Card. You cannot use IPP print unless this option is checked.

The following items are returned when attributes are requested from an IPP client.

Printer Name Type in a name to identify the printer during IPP printing.

Printer Location
Type in the location of the printer.

Printer Information
Type in a description of the printer.

More Printer Information
Specify a URL where detailed information about this particular printer can be found.

Printer Driver Installer
Specify a URL where the printer driver installer can be found.

Printer Make and Model
Type in the printer manufacturer name and model name.

More Printer Information Manufacturer
Specify a URL where detailed information about the printer manufacturer particular printer can be found.

Operations Supported
Use these settings to specify the IPP printing operations supported by the printer. Unchecking an item means that it is not supported for IPP printing.

Document Format Supported

Put a check mark next to the document data formats that the printer supports for IPP printing.

Document Format

Select the default document data format. The uses this data format for IPP printing when no data format is specified by the client.

Message from Operator

Type in a message from the printer administrator to users.

job-k-octets-supported

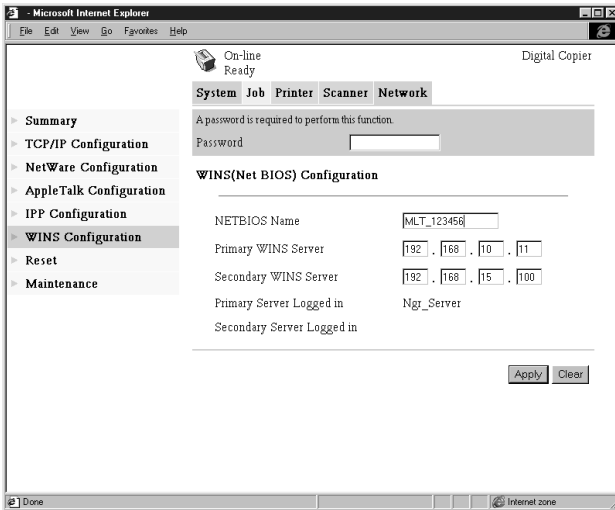
Specify, in kilo-octet units, the upper limit and lower limit of the total job size that the printer can receive.

Apply Button Click this button to apply any settings you have input up to this point.

Clear Button Click this button to cancel any settings you have input up to this point.

8.6 WINS Configuration

This screen appears when you click the **WINS Configuration** menu on the **Network** tab. It lets you change WINS settings. WINS (Windows Internet Name Service) makes it possible for a device, such as your Network Interface Card, to register a NetBIOS name (like MLT_995243) along with its current IP address (like 192.9.200.200). A client wanting to contact the printer uses the WINS server to match the NetBIOS name with an IP address. Most users will find it easier to remember the NetBIOS name for the printer rather than its IP address.



Password Input the password assigned to the Network Interface Card. The initial factory default is **sysadm**. Clicking the **Apply** button after inputting the wrong password displays a password error message without changing the settings.

NetBIOS Name The NetBIOS name for the Network Interface Card is shown on this screen. The default NetBIOS name is the Network Interface Card's serial number (for example, MLT_123456), unless

you previously configured a name for the Network Interface Card with DHCP.

You may change the NetBIOS name here, by entering a new name. The name can be up to 15 characters long.

Primary WINS Server

If you previously configured a DHCP server to provide the Network Interface Card with the IP address of the primary WINS server, this item shows the address. Otherwise, enter the IP address of the primary NetBIOS name server here.

Secondary WINS Server

You may also enter the IP address of a secondary NetBIOS name server, if you want. If you configured your DHCP server to provide the address of a secondary WINS server to the Network Interface Card, the address fields are filled in with the appropriate information automatically.

Primary Server Logged in

Name of the Primary WINS Server to which the printer is currently logged in.

Secondary Server Logged in

Name of the Secondary WINS Server to which the printer is currently logged in.

Apply Button Click this button to apply any settings you have input up to this point.

Clear Button Click this button to cancel any settings you have input up to this point.

After you configure the NetBIOS (WINS) settings, restart the printer.

The Network Interface Card's status page should now show that the Network Interface Card is successfully registered with the WINS server. The items labeled **Primary Server Logged in** and **Secondary**

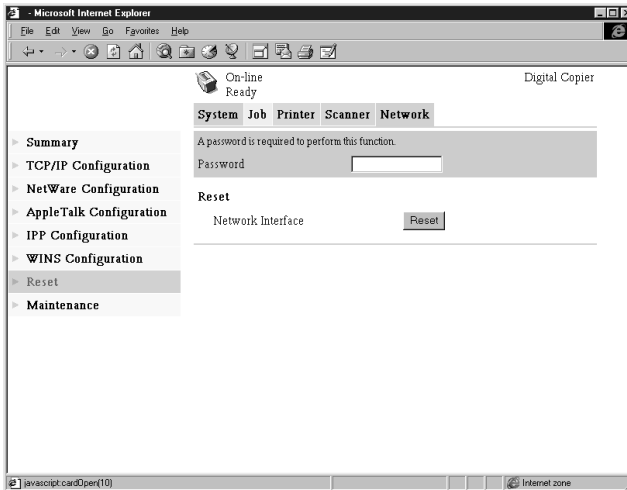
Server Logged in on the **WINS Configuration** screen now indicate which WINS server(s) the Network Interface Card is registered with. Under normal circumstances, your Network Interface Card automatically renews its registration with the WINS server before its lease expires.

8.7 Reset

This screen appears when you click the **Reset** menu on the **Network** tab. Use this screen to reset the Network Interface Card so new settings can take effect.

Note

- After resetting the Network Interface Card, be sure to power the Digital Copier down and then back up again.



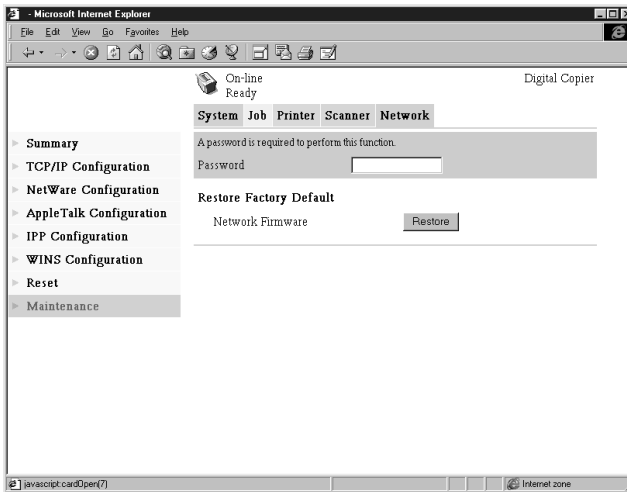
Password

Input the password assigned to the Network Interface Card. The initial factory default is **sysadm**. Clicking the **Apply** button after inputting the wrong password displays a password error message without changing the settings.

Reset Button Click this button to reset the Network Interface Card.

8.8 Maintenance

This screen appears when you click the **Maintenance** menu on the **Network** tab. Use this screen to restore the Network Interface Card to its initial factory default settings.





Password Input the password assigned to the Network Interface Card. The initial factory default is **sysadm**. Clicking the **Apply** button after inputting the wrong password displays a password error message without changing the settings.

Restore Factory Defaults Click the **Restore** button to restore the Network Interface Card to its initial factory defaults.

Appendix Status List

The current Digital Copier status is indicated by an icon in the upper part of the window. More detailed messages appear in the text area next to the icon. The contents of the list are arranged in order of importance (most critical first).

Icon	Status	Message	Description
	Not Ready	During Tech.Rep. Mode	Technical Representative Mode
	Fatal	Fatal Code: Cxxxx	Indicates error C-Code.
		Controller Fatal Error	
		Communication Error	Error during communication between Digital Copier and printer controller
		Fuser Web Empty	
		Waste Toner Bottle Full	
	Error	Printer Jam: xxxxx	("xxxx" is replaced by one of the details listed below.)
		Feeding Tray1	
		Feeding Tray2	
		Feeding Tray3 / LCC	
		Feeding Tray4	
		Manual Feed	
		LCT Paper Feeder	
		Paper Vertical Transfer Unit Lower	
		Paper Vertical Transfer Unit Upper	
		Paper Transfer Unit	
		Paper Separator	
		Fuser	
		Duplex Reverse Unit	
		Duplex Horizontally Transfer	

Appendix Status List

Icon	Status	Message	Description
		Reverse Unit	
		1st Tray Exit Sensor	(When 9708 is installed only)
		Process Tray Exit Sensor	(When 9708 is installed only)
		Elevator Tray Exit Sensor	(When 9708 is installed only)
		Paper Bundle Exit Sensor	(When 9708 is installed only)
		Punch Registration Sensor	(When 9708 is installed only)
		Paper Vertical Transfer Sensor	(When 9708 is installed only)
		Paper Exist Sensor of Staple	(When 9708 is installed only)
		Paper Center Crease SW Back Sensor	(When 9708 is installed only)
		Paper Folding Unit	
		Staple Jam	(When 9708 is installed only)
		Transfer Unit Jam	
		Exit Unit Jam	
		Paper Bundle Exit Unit Jam	
		Inserting Section	
		Staple Jam	
		Staple Jam2	(When 9710 is installed only)
		Remaining Paper: xxxxx	("xxxx" is replaced by one of the details listed below.)
		Feeding Tray1	
		Feeding Tray2	
		Feeding Tray3 / LCC	
		Feeding Tray4	
		Manual Feed	

Appendix Status List

Icon	Status	Message	Description
		LCT Paper Feeder	
		Paper Vertical Transfer Unit Lower	
		Paper Vertical Transfer Unit Upper	
		Paper Transfer Unit	
		Paper Separator	
		Fuser	
		Duplex Reverse Unit	
		Duplex Horizontally Transfer	
		Reverse Unit	
		1st Tray Exit Sensor	(When 9708 is installed only)
		Process Tray Exit Sensor	(When 9708 is installed only)
		Elevator Tray Exit Sensor	(When 9708 is installed only)
		Paper Bundle Exit Sensor	(When 9708 is installed only)
		Punch Registration Sensor	(When 9708 is installed only)
		Paper Vertical Transfer Unit	(When 9708 is installed only)
		Paper Exist Sensor of Staple	(When 9708 is installed only)
		Paper Center Crease SW Back Sensor	(When 9708 is installed only)
		Paper folding Unit	(When 9708 is installed only)
		Paper Transfer Unit Sensor	(When 9708 is installed only)
		Process Tray	(When 9709, 9710/9711 is installed only)
		Exit Option Unit	(When 9709, 9710/9711 is installed only)

Appendix Status List


Icon	Status	Message	Description
		Inserting Section	((When 9709, 9710/ 9711 is installed only)
		Scanner Jam: xxxxx	("xxxx" is replaced by one of the details listed below.)
		EDH Feeder Unit	
		EDH Transfer Unit	
		EDH Exit Unit (Straight Exit)	
		EDH Exit Unit (Reverse Exit)	
		EDH Reverse Unit	
		EDH Single Feed Unit	
		Remaining Paper: xxxxx	("xxxx" is replaced by one of the details listed below.)
		EDH Feeder Unit	
		EDH Transfer Unit	
		EDH Exit Unit	
		EDH Reverse Unit	
		EDH Single Feed Unit	
		Bad Setting (Printer): xxxxx	("xxxx" is replaced by one of the details listed below.)
		Front Door	
		Waste Toner Bottle	
		Paper Feed Door	
		Exit Door	
		Cabinet Paper Feeder Door	
		Cabinet Reverse Unit Door	
		Reverse Unit Door	

Appendix Status List


Icon	Status	Message	Description
		Duplex Unit	Displayed when printing is stopped due to duplex unit problem.
		Finisher	(When 9708 is installed only)
		Process Tray	(When 9708 is installed only)
		1st Tray	(When 9708 is installed only)
		Finisher	(When 9709 is installed only)
		1st Tray	(When 9709 is installed only)
		Upper Cover	(When 9709 is installed only)
		Staple Cover	(When 9709 is installed only)
		Finisher	(When 9710/9711 is installed only)
		Upper Cover	(When 9710/9711 is installed only)
		Front Cover	(When 9710/9711 is installed only)
		Scanner Bad Setting: xxxxx	("xxxx" is replaced by one of the details listed below.)
		EDH Feeder Unit	
		Transfer Unit	
		Reverse Unit	
		Single Feed Unit	
		Toner Empty	
		Test Stapling has not Complete	
		Reach to Maximum of Division Control	

Appendix Status List

Icon	Status	Message	Description
		Original on the Platen	
		Other Scanner Error	
		Tray (Bin) Full: xxxxx	("xxxx" is replaced by one of the details listed below.)
		Finisher 1st Tray Full	
		Finisher Process Tray	
		Finisher Elevator Tray	
		Bin 1	
		Bin 2	
		Bin 3	
		Bin 4	
		Bin 5	
		Current Tray Empty: xxxxx	("xxxx" is replaced by one of the details listed below.)
		Feeding Tray 1	
		Feeding Tray 2	
		Feeding Tray 3	
		Feeding Tray 4	
		Manual Feed	
		LCT Paper Feeder	
		LCC Paper Feeder	
		Staple Empty	(In staple mode only)
		Other Printer Error	
		NVRAM Error	Controller NVRAM error
		NIC Initial Error	Network interface initialization error
		GUI Version Error	Utility version error
		Flash ROM Error	ROM update data write failure
		Controller DATA Memory Full	Insufficient memory for image conversion

Icon	Status	Message	Description
		SMTP TimeOut	SMTP server connection timeout
		SMTP NonConnect	SMTP server connection broken
		SMTP Request Error	SMTP request error
		FTP Connection Busy	FTP server connection refused
		FTP NonConnect	FTP server connection broken
		FTP User Approval Error	FTP server user authentication error
		FTP Server Error	FTP server error
		NIC Error	Network interface internal processing error
		Controller Error	Controller internal processing error
		Invalid Destination Address	Incorrect e-mail address specified on the control panel or no reply-to data is specified.
	Caution	Printer Caution: xxxxx	("xxxx" is replaced by one of the details listed below.)
		Un-matched Paper Size Stop	
		Printer Stop when Manual Feed Selected	
		Other Printer Caution	
		Scanner Caution: xxxxx	("xxxx" is replaced by one of the details listed below.)
		Can not Detect the Original Size	
		Other Scanner Caution	
		HDD format Error	
		Flash ROM Update Error	Flash ROM update data load failure

Appendix Status List

Icon	Status	Message	Description
	Attention	Printer Attention: xxxxx	("xxxx" is replaced by one of the details listed below.)
		Toner near Empty	
		Waste Toner Bottle near Full	
		Fuser Web near Empty	
		Staple Empty	(In non-staple mode only)
		Duplex drawer is side out	
		Scanner Attention: xxxxx	("xxxx" is replaced by one of the details listed below.)
		Light not Enough	Insufficient light
		Not Enough Memory Space	Insufficient memory for scanning
		Waiting For Flash ROM Load	Flash ROM update data loading
		Waiting For Flash ROM Write	ROM update data writing
		Flash ROM Update Complete	ROM update complete
		JOB Full	Job registration limit exceeded
		Waiting For Scan Transfer	Scan data being distributed
		Waiting For HDD Format	
		Connecting Hard Disk	
		During Test Copy	
During User Choice			
Preparing Scanner			
	Status Information	Preheating	
		Interrupting	
	Ready	Ready	
		During Copier Power Save Mode	



www.imagistics.com

www.imagistics.com

Imagistics International Inc.
100 Oakview Drive
Trumbull, CT 06611

©Imagistics International Inc. 2002
Printed in USA
Part Number: DL4600370

The information contained in this manual is subject to change without notice to incorporate improvements made to the products listed in this manual.