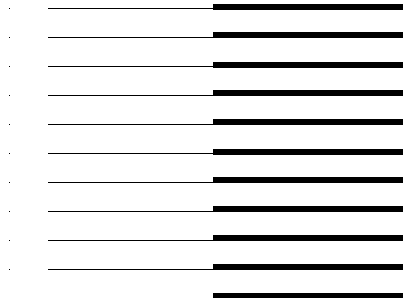


Océ Printer Driver

Adobe[®] PostScript[®] 3[™]

Installation Guide





Océ-Technologies B.V.

Trademarks

Products in this manual are referred to by their trade names. In most, if not all cases, these designations are claimed as trademarks or registered trademarks of their respective companies.

- The LZW algorithm of the PostScript option is published under US patent no. 4.558.302 and foreign counterparts.

Copyright

© 2004 Océ-Technologies B.V. Venlo, The Netherlands

All rights reserved. No part of this work may be reproduced, copied, adapted, or transmitted in any form or by any means without written permission from Océ.

Océ-Technologies B.V. makes no representation or warranties with respect to the contents hereof and specifically disclaims any implied warranties of merchantability or fitness for any particular purpose.

Further, Océ-Technologies B.V. reserves the right to revise this publication and to make changes from time to time in the content hereof without obligation to notify any person of such revision or changes.

Contents

Chapter 1

Océ PS3 Driver

Introduction 6

What is the Océ Printer Driver for Adobe® PostScript® 3™? 6

Installation on a Macintosh 7

Installation on the Mac OS 8.6 to 9.x 7

Installation on a Mac OS X 13

Installation under Windows platforms 16

Define the correct installation method 16

Installation using the ‘Add a printer’ method 17

Installation using the ‘Setup’ method 17

Caution concerning printer names 19

Installation of Asian fonts (for Océ TDS printers only) 20

Install the Asian fonts on a Windows platform 20

Install the Asian fonts on a Mac system 20

Un-installation 22

Un-install the driver on Macintosh 22

Un-install the driver on a Windows platform 22

Chapter 1

Océ PS3 Driver

This manual discusses the following topics: an introduction to PostScript, installation on an Apple Macintosh or on a Windows 98, Windows ME, Windows NT 4.0, Windows 2000 or Windows XP workstation.

We recommend that you regularly visit our web site (<http://www.oce.com> - International section) and consult the 'Drivers, Downloads and Support' section for the most up-to-date version of the driver covered in this manual.



Introduction

This installation manual guides you through the installation on a workstation of the Océ PS3 Driver for Océ TDS and Océ TCS printers. Once you have correctly installed the files, see the on-line help for a full explanation of how to use the options and dialog boxes.

What is the Océ Printer Driver for Adobe® PostScript® 3™?

This driver can be used from any Windows or Apple Macintosh application to print on your Océ printer. It supports the PostScript® 3 printer description language described in the ‘Adobe Systems Incorporated PostScript Language Reference Manual’.

This enables your printer to become a true wide format printer, producing posters from Illustrator, Excel, Word, Write, etc. as well as CAD or electronic design applications, among others.

The versatility of PostScript® is well known, particularly if you frequently use graphics applications. Many applications can send data to printers in PostScript® format.

Normally, you never see any of the PostScript® code. Everything that goes on inside your computer and the printer is hidden. The printer driver takes care of translating the application’s internal data into PostScript®, and it also makes sure you can select printer features in a simple way.

Your printer recognizes a PostScript® file, using the in-built automatic language sensing feature.

Installation on a Macintosh

You can install the PS3 driver on the Mac systems 8.6 to 9.x (procedure below) and on the Mac OS X (10.3 and higher. See 'Installation on a Mac OS X' on page 13).

Installation on the Mac OS 8.6 to 9.x

This procedure describes the installation on the Mac OS 8.6 to 9.x.

The installation is divided in three steps:

- Install the Adobe Driver
- Install the printer PPDs
- Set up the Océ Printer driver with the Adobe Driver just installed.

Install the Adobe driver

- 1 Insert the Océ Drivers CD-ROM into your CD-ROM drive.
- 2 Go to the 'PostScript 3' folder.
- 3 Open the 'Products' folder.
- 4 Open the 'MacOS8_9' folder.
- 5 Open the folder that matches to your language.
- 6 Open the 'AdobePS' folder.
- 7 Double-click the 'AdobePS Installer' icon.



AdobePS Installer

- 8 An AdobePS splash screen appears on your screen.
- 9 Click 'Continue'.

A license agreement is displayed. The Adobe Printer Drivers may be used on several printers using Adobe PostScript software, and on an unlimited number of computers (called CPUs in the license text).
- 10 Click 'Agree' to continue with installation.
- 11 Click 'Install'.

A progress bar indicates that the software is being installed and each file name is displayed.

When the installation is complete, a message is displayed to indicate that the installation was successful.

Install the printer PPDs

Note: *If you need to install an Asian set of fonts, follow the procedure: ‘Install the Asian fonts on a Mac system’ on page 20.*

- 1 Insert the Océ Drivers CD-ROM into your CD-ROM drive.
- 2 Go to the ‘PostScript 3’ folder.
- 3 Open the ‘Products’ folder.
- 4 Open the folder that matches to your language.
- 5 Open the ‘PPDs’ folder.
- 6 Copy the PostScript printer description (PPD) files, to the ‘System’ folder/‘Extensions’ folder/‘Printer Descriptions’ folder.

Note: *It is only necessary to copy the PPD according to your printer type.*

Set up the printer with the AdobePS driver

Use the TCP/IP network to set up the printer.

Note: *TCP/IP protocol must be installed, setup and running before executing the following procedure.*



Set up through TCP/IP

Macintosh operating systems 8.6 to 9.x provide the possibility to connect a printer by using standard TCP/IP LPR Protocol.

- 1 Go to the ‘AdobePS Components’ folder.
- 2 Double click on ‘Desktop Printer Utility’.

You get the following window:

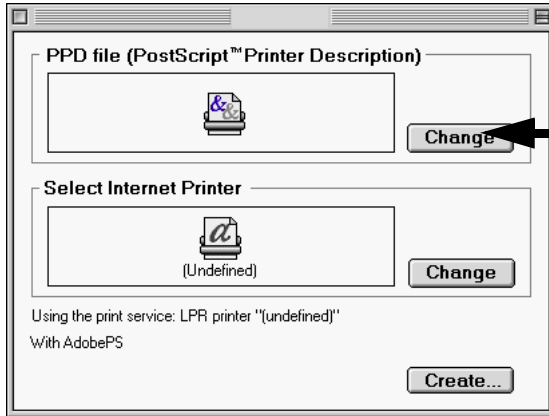


[1] New printer service window

- 3 Select ‘AdobePS’.
- 4 Select ‘Printer (LPR)’.

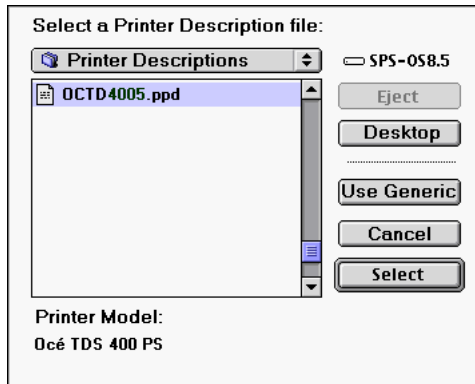
- 5 Click on OK.

You now get the following window:



- 6 Start the PPD selection by clicking on the first 'Change' button.

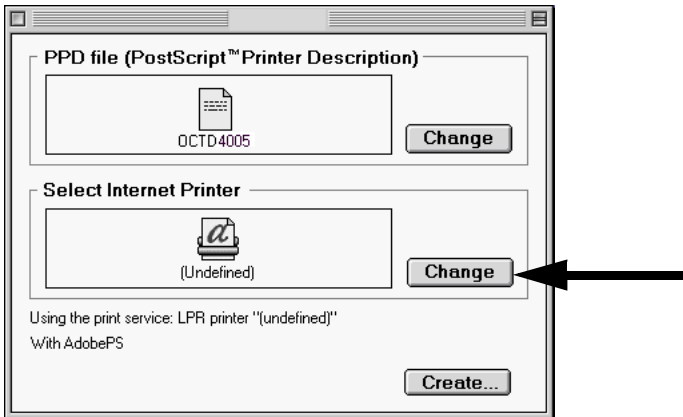
You now get the following window:



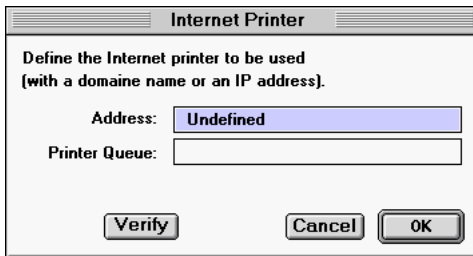
[2] PPD file selection window

- 7 Now select the appropriate PPD for your printer.
(For example: OCTD4005.PPD).
- 8 Click on 'Select'.

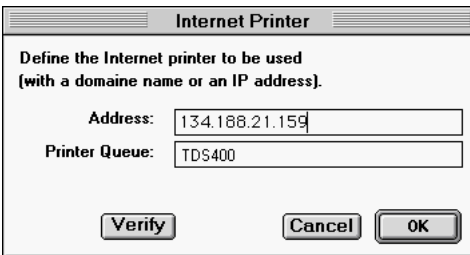
The previous window is displayed again:



- 9 Start the printer selection by clicking on the second 'Change' button. You now get the LPR printer settings.

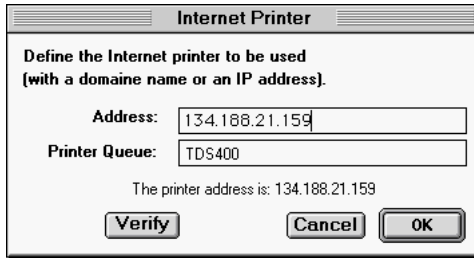


- 10 Fill in the IP printer address & printer destination.

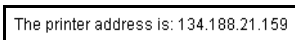


[3] Example of printer address

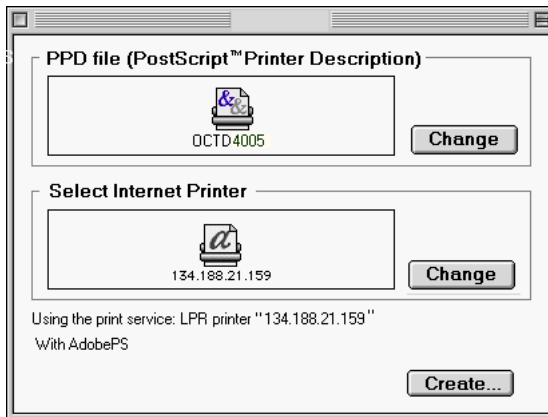
- 11 Verify the connection by clicking on the 'Verify' button.



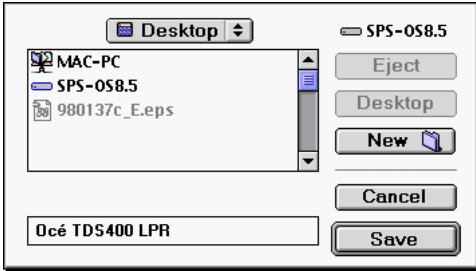
If both IP printer & printer destination are found, a message is displayed within the window:



- 12 Click on the OK button after the verification has been performed correctly. You are now back to the main window:



- 13 Click on the 'Create' button to create the printer resource.
The printer resource name is now required.



- 14 Enter the desired name and click on 'Save'.
The printer resource is now available on your desktop.



Installation on a Mac OS X

This procedure describes the installation on the Mac OS X (10.3 and higher).

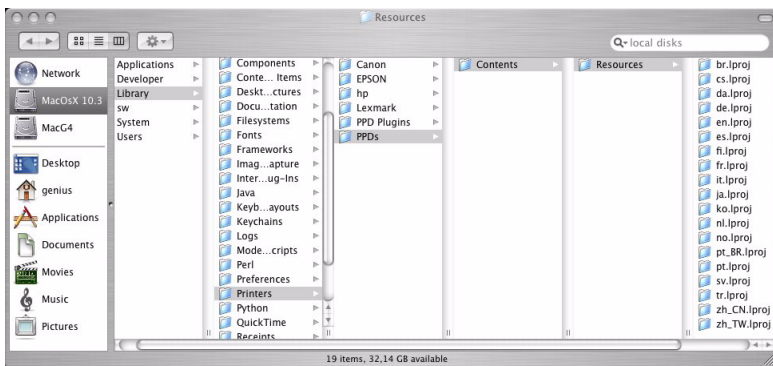
The installation is divided in two steps:

- Install the printer PPDs
- Set up the Océ Printer.

Note: *If you need to install an Asian set of fonts, follow the procedure: ‘Install the Asian fonts on a Mac system’ on page 20.*

Install the printer PPDs

- 1 Insert the Océ Drivers CD-ROM into your CD-ROM drive.
- 2 Go to the ‘PostScript 3’ folder.
- 3 Open the ‘Products’ folder.
- 4 Open the ‘MacOS_X’ folder.
- 5 Open the folder that matches to your language.
- 6 Select the .ppd (PostScript printer description) file according to your printer type and copy it in the ‘[System_Disk]/Library/Printers/PPDs/Contents/Resources/[language].lproj’ folder (e.g. copy the English .ppd file on the ‘en.lproj’ folder to install the driver in English).



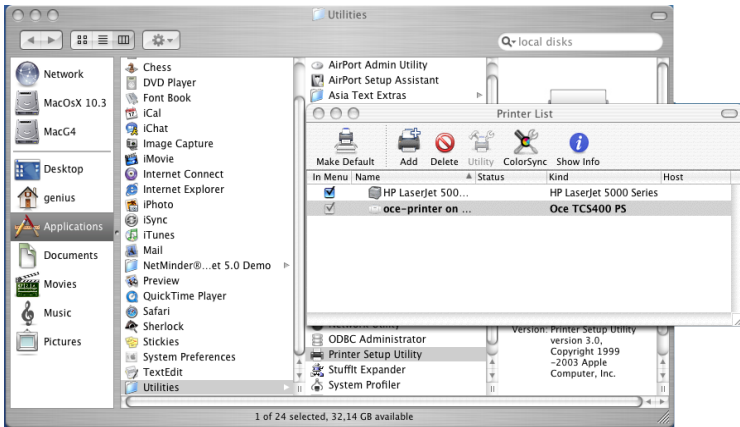
Setup the Océ printer

Note: Make sure that the 'Printer Setup Utility' application is closed.

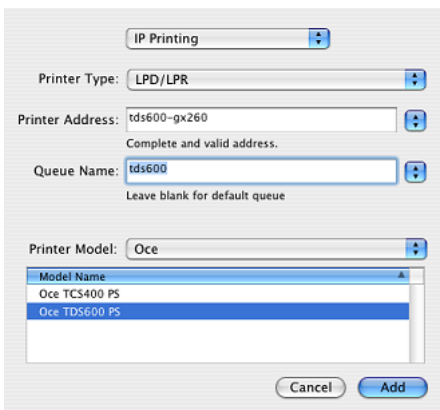


Install the printer

- 1 In the 'Finder', open 'Applications' and 'Utilities'.
- 2 Double click on the 'Printer Setup Utility' application to open the 'Printer List' window.



- 3 Click 'Add' to access the configuration window. The application loads the drivers.
- 4 Select 'IP Printing'.



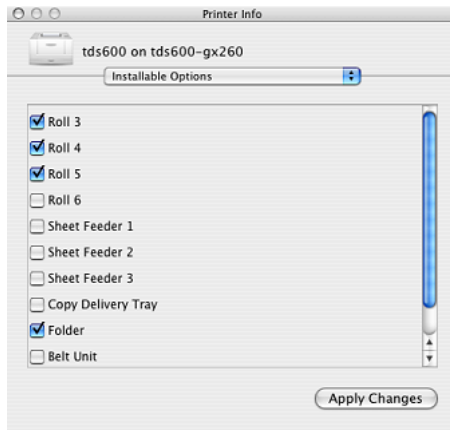
- 5 In 'Printer Type', select 'LPD/LPR'.
- 6 Enter the printer address (Contact your network administrator).
- 7 Enter a queue name (e.g. 'Océ_printer' or 'tds600').

- 8 In 'Printer Model', select 'Oce' and choose your printer model.
- 9 Click 'Add', the printer appears in the list.
Note: *The last printer installed is automatically defined as the default one.*



Configure the printer

- 1 Select the printer in the 'Printer List'.
- 2 From the menu, open 'Printers/Show Info'.
- 3 Configure the 'Name & Location', the 'Printer Model' and the 'Installable Options' (rolls, sheet feeders, copy delivery tray, folder, belt unit...) according to your printer features.



- 4 Click the 'Apply Changes' button to validate.

Note: *For an easier access to your printer, you can create a shortcut on your desktop: from the 'Printers' menu, use the 'Create Desktop Printer' function.*

Installation under Windows platforms

You can install the driver on workstations under:

- Windows 98, Me.
- Windows NT, 2000, XP.

Note: *To install the driver under Windows NT 4.0 you need NT Service pack number 6 or higher for correct operation of the driver.*

Note: *To install the driver under a Windows NT, 2000 or XP platform, you need the System Administrator rights on your computer.*

Note: *To get the installation process on a Print server, consult the Océ Connectivity Manual.*

Define the correct installation method

According to your network architecture, you can use different methods to install the Océ PS3 driver on a workstation. Océ recommends to use:

- The 'Add (a) printer' method in a Client/Server configuration.
- The 'Setup' method when the workstation is directly connected to the printer (peer to peer).

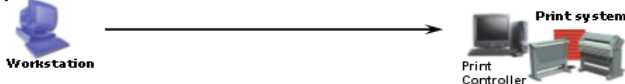
Client /Server configuration

'Add printer' method



Peer to peer configuration

setup method



Note: *Contact your local network administrator to know your network configuration and to get information about the printer to address (you can refer to the Océ Connectivity Manual for more detailed explanations).*

Installation using the ‘Add a printer’ method

If you are in a Client/Server network configuration, Océ recommends to install the PS3 driver on the workstation using the ‘Add (a) printer’ method. In this case, the version of the driver installed on the workstation is the same as the one on the print server (contact your system administrator to make sure that the latest version of the driver is installed on the print server).

Note: *The ‘Add Printer’ Wizard is slightly different from a Windows Operating System version to another, but the procedure remains the same. The procedure below describes an installation via the ‘Add Printer’ Wizard under Windows XP.*

▼ **Install the driver using the ‘Add a printer’ wizard**

- 1 From the ‘Start/Settings’ menu, open the ‘Printer and faxes’ window.
- 2 Double-click ‘Add a Printer’ to launch the installation wizard.
- 3 Click ‘Next’.
- 4 Choose to set-up a network printer and click ‘Next’.
- 5 Select ‘Connect to this printer’ and either:
 - enter the name of the printer, provided by your local network administrator.
 - or click ‘Next’ to browse for the print server and select the printer queue.
- 6 Click ‘Next’.
- 7 Indicate whether you want to use the printer as the default one and click ‘Next’.
- 8 Click ‘Finish’.

Installation using the ‘Setup’ method

You can get the PS3 setup.exe file from the Océ Drivers CD-ROM or you can download it from the Océ international web site (www.oce.com).

Install PS3 on a workstation from the Océ Drivers CD-ROM

▼ Launch the installation from the Océ Drivers CD-ROM

- 1 Log on as the System Administrator of your computer.
- 2 Insert the Océ Drivers CD-ROM in the CD drive.
- 3 Click on 'Install Products' and select your printer.
- 4 Choose 'PostScript3'.
- 5 Click 'Install' to launch the installation wizard.
- 6 Choose the set-up language and click 'OK'.
- 7 Click 'Next'.
- 8 For the next installation steps, follow the procedure 'Install the Océ PS3 driver' on page 18.

Install PS3 after a web download

▼ Get the installation file

- 1 Go to the international web site (www.oce.com).
- 2 From the 'Drivers, Downloads and Support' section, go to 'Drivers'.
- 3 Select the driver to install and click 'Go'.
- 4 Follow the download and retrieval instructions.
- 5 Once the zipped.exe file is downloaded on your local directory, double-click on it and unzip the content (by default in \OCEPS3).
- 6 Log on as the system administrator of your computer, and go to the directory where you extracted the installation files.

▼ Install the Océ PS3 driver

- 1 Launch the installation (double-click on setup.exe).
- 2 Read the licence agreement and click 'Yes'.
- 3 Choose your language and click 'Next'.
- 4 Select your printer model and the output port associated to your printer (contact your local system administrator to get it).
- 5 Type a name for the new printer (see caution...).
- 6 Indicate whether you want to use the printer as the default one and whether you want to print a test page, and click 'Next'.
- 7 Do not share the printer as you are installing it on a workstation.
- 8 Click 'Next' and 'Finish'.

Caution concerning printer names

If you are installing the Océ PS3 driver on a Windows NT/2000/XP platform:

- The printer name may include up to a maximum of 220 characters.
- Do not use special characters ('!', ',', '\').

If you are installing the driver on a Windows 9x platform:

- The printer name may include up to a maximum of 31 characters.
- Do not use special characters ('\', '=', ';', ',')

Installation of Asian fonts (for Océ TDS printers only)

Note: *The Asian sets of fonts are available for the Océ TDS300, Océ TDS400, Océ TDS600 and Océ TDS800.*

Install the Asian fonts on a Windows platform

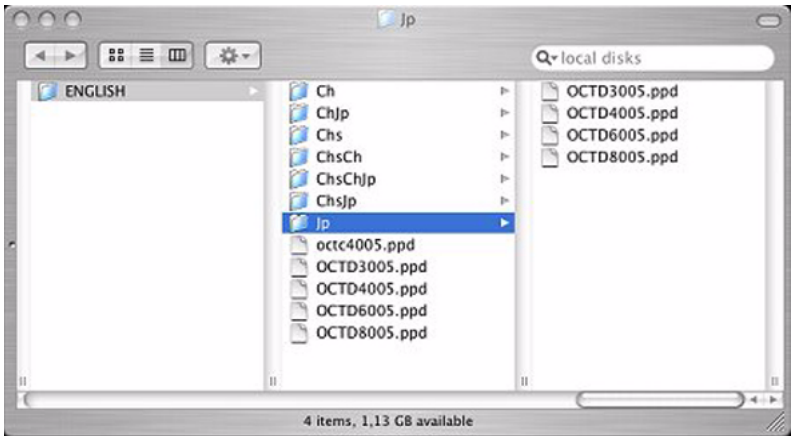
▼ **Install a set of fonts**

- 1 Insert the Océ Drivers CD-ROM into your CD-ROM drive.
- 2 Select the CD-ROM.
- 3 Select 'Products'.
- 4 Select 'PS3'.
- 5 Select your language (for example, English).
- 6 Click on 'SETUP.EXE'.
- 7 Select your printer.
- 8 Beside the printer selection model, click on 'Other'.
- 9 Select the set of fonts to install and click on 'OK'.
- 10 Follow the instructions on the screen to finish configuration.

Install the Asian fonts on a Mac system

▼ **Select the set of fonts**

- 1 Insert the Océ Drivers CD-ROM into your CD-ROM drive.
- 2 Go to the 'PostScript 3' folder.
- 3 Open the 'Products' folder.
- 4 Open the 'MacOS8_9' or 'MacOS_X' folder according to your system.
- 5 Open the folder that matches to your language.
- 6 Under 'MacOS8_9', open the 'PPDs' folder.
- 7 Open the folder that matches the Asian fonts you need ('Ch' stands for Traditional Chinese, 'Jp' for Japanese, 'Chs' for Simplified Chinese).E.g. if you need to install both the Traditional Chinese and the Japanese fonts, open the 'ChJp' folder. If you need the Japanese fonts only, open the 'Jp' folder.



- 8 Select the .ppd (PostScript printer description) file according to your printer type and:
 - For Mac OS 8.6 and 9.x, copy it to the 'System' folder/'Extensions' folder/'Printer Descriptions' folder.
 - For Mac OS X (10.3 and higher), copy it in the '[System Disk]/Library/Printers/PPDs/Contents/Resources/<language>.lproj' folder.

Un-installation

Note: *Before uninstalling PS3 driver, make sure the driver is not in use.*

Un-install the driver on Macintosh

- ▼ **Un-install on Macintosh operating systems 8.6 to 9.x**
 - 1 Drag the printer icon from the 'Desktop' to the 'Trash can'.
 - 2 Empty the 'Trash can'.

- ▼ **Un-install on Macintosh OS X (10.3 and higher)**
 - 1 In the 'Finder', open 'Applications' and 'Utilities'.
 - 2 Double click on the 'Printer Setup Utility' application to open the 'Printer List' window.
 - 3 Select the printer associated to the driver.
 - 4 Click 'Delete'.

Un-install the driver on a Windows platform

Note: *To remove the driver from a Windows NT, 2000 or XP platform, you need the System Administrator rights on your computer.*

The un-installation method depends on the installation method you used. Do not mix Installation/Un-installation procedure with the different methods, use one of the following options:

- ▼ **Un-install after a 'Add a printer' installation**
 - 1 From the Windows 'Start' menu, select 'Settings' and open the 'Printers (and faxes)' window.
 - 2 Right-click on the printer and select 'Remove'.



Un-install after a setup installation

- 1 From the Windows 'Start' menu, select 'Settings' and 'Control Panel'.
- 2 Choose 'Add/Remove programs'.
- 3 Select 'Océ PS3' and your printer model.
- 4 Click 'Next'.
- 5 Select the printer(s) to un-install.
- 6 Click on 'Next' and 'Finish'.