

Installation guide



Océ Printer Driver for Adobe Postscript 3

Installation and configuration



A CANON COMPANY

Copyright and Trademarks

Copyright

Copyright 2012-2018 Océ.

Illustrations and specifications do not necessarily apply to products and services offered in each local market. No part of this publication may be reproduced, copied, adapted or transmitted, transcribed, stored in a retrieval system, or translated into any language or computer language in any form or by any means, electronic, mechanical, optical, chemical, manual, or otherwise, without the prior written permission of Océ.

OCÉ MAKES NO WARRANTY OF ANY KIND WITH REGARD TO THE CONTENTS OF THIS PUBLICATION, EITHER EXPRESS OR IMPLIED, EXCEPT AS PROVIDED HEREIN, INCLUDING WITHOUT LIMITATION, THEREOF, WARRANTIES AS TO MARKETABILITY, MERCHANTABILITY, FITNESS FOR A PARTICULAR PURPOSE OF USE OR NON-INFRINGEMENT. OCÉ SHALL NOT BE LIABLE FOR ANY DIRECT, INCIDENTAL, OR CONSEQUENTIAL DAMAGES OF ANY NATURE, OR LOSSES OR EXPENSES RESULTING FROM THE USE OF THE CONTENTS OF THIS PUBLICATION.

Océ reserves the right to revise this publication and to make changes from time to time in the content hereof without obligation to notify any person of such revision or changes.

Language

Translation of the original instructions that are in British English.

Trademarks

Océ, Océ ColorWave, Océ PlotWave, Océ TDS are registered trademarks of Océ-Technologies B.V. Océ is a Canon company.

Adobe and PostScript are either registered trademarks or trademarks of Adobe Systems Incorporated in the United States and/or other countries.

Microsoft, Server, Windows, Windows Server are trademarks or registered trademarks of Microsoft Corp. incorporated in the United States and/or other countries.

All other trademarks are the property of their respective owners.

Contents

Chapter 1

Introduction	5
Online resources for Océ Printer Driver for Adobe Postscript 3.....	6
What is the Océ Printer Driver for Adobe® PostScript® 3™?.....	7

Chapter 2

Install Océ PS3 driver on a Macintosh operating system	9
Retrieve the installation files of the Océ PS3 driver for Mac OS X.....	10
Set up and configure the Océ Printer.....	11
Print a test page from Mac OS X 10.10 and higher.....	13
Understand the Asian fonts.....	14
Understand the .PPD file name.....	15
Configure the Océ printer from the CUPS interface.....	17
Enable the CUPS web interface.....	20

Chapter 3

Install Océ PS3 driver on Windows platforms	21
Install Océ PS3 driver on Windows platforms.....	22
Install the driver using the 'Setup' method.....	24
Retrieve the installation files.....	24
Install the driver using the 'Setup' method (recommended).....	25
Install the driver using the 'Add a printer' method.....	26
Install the driver using the 'Add a printer' wizard (Windows 7).....	26
Install the driver using the 'Add a printer' wizard (Windows 8 / 8.1 / 10 and Windows Server 2012 R2 / 2016).....	27
Configure the Océ Printer.....	28

Chapter 4

Uninstall Océ PS3	31
Uninstall on Macintosh OS X 10.10 and higher.....	32
Uninstall the driver (Windows operating system).....	33

Index	35
--------------------	-----------

Chapter 1

Introduction

Online resources for Océ Printer Driver for Adobe Postscript 3

Introduction

We advise you to regularly visit the Downloads site to keep up-to-date with the latest resources (drivers, software applications and related documentation).

For support information please contact your Canon local representative.

Useful links on the Internet

- Link to the corporate Downloads website: "<http://downloads.oce.com/>", to find the latest printer drivers and related documentation.
- Link to the corporate Support website: "<http://www.canon.com/support/>", to find an entry point to your Canon local representative.

Get the latest version of the driver

Connect to the corporate Downloads website to find the latest downloads and drivers available for the wide-format systems.

["http://downloads.oce.com/ProductDownloads/Index/423"](http://downloads.oce.com/ProductDownloads/Index/423)

What is the Océ Printer Driver for Adobe® PostScript® 3™?

Introduction

This installation manual discusses the following topics: an introduction to PostScript, installation and un-installation of the PostScript driver on an Apple Macintosh or on a Microsoft Windows workstation.

This manual guides you through the installation on a workstation of the Océ PS3 Driver for those printers:

- Océ ColorWave (PP)
- Océ PlotWave
- Océ TDS
- Océ TCS

Once you have correctly installed the files, see the on-line help for a full explanation of how to use the options and dialog boxes.



NOTE

We recommend that you regularly consult the Downloads website (["http://downloads.oce.com"](http://downloads.oce.com)) for the most up-to-date version of the driver covered by this manual. (Direct link: ["http://downloads.oce.com/ProductDownloads/Index/423"](http://downloads.oce.com/ProductDownloads/Index/423))

Definition

This driver can be used from any Windows or Apple Macintosh application to print on your Océ printer. It supports the PostScript 3 printer description language described in the 'Adobe Systems Incorporated PostScript Language Reference Manual'.

Adobe® PostScript® 3™ workflow

The versatility of PostScript is well known, particularly if you frequently use graphics applications. Many applications can send data to printers in PostScript format.

Normally, you never see any of the PostScript code. Everything that goes on inside your computer and the printer is hidden. The printer driver takes care of translating the application's internal data into PostScript, and it also makes sure you can select printer features in a simple way.

Your printer recognizes a PostScript file, using the in-built automatic language sensing feature.

Chapter 2

Install Océ PS3 driver on a Macintosh operating system

Retrieve the installation files of the Océ PS3 driver for Mac OS X

Purpose

The installation is divided into two steps:

- Recover the printer PPDs (installation files) from the Océ website.
- Set up and configure the Océ printer driver.

Procedure

1. Go to the Océ Downloads website ("<http://downloads.oce.com>").
2. Select your printer and click 'Show downloads'.

The related Downloads page opens, by default, the 'Drivers and Software' tab.



NOTE

You can also go directly to the 'Downloads' page of the printer driver: "<http://downloads.oce.com/ProductDownloads/Index/423>"

3. Select 'Drivers' from the 'Type' list.
Then select your 'Operating System' and your 'Language'.
4. Follow the download and retrieval instructions (available from the 'Info' button) to download the latest version of Océ Adobe® PostScript® 3™ Driver.

Set up and configure the Océ Printer

Introduction

The procedure below describes how to install the PS3 driver on a Mac OS X 10.10 or higher.

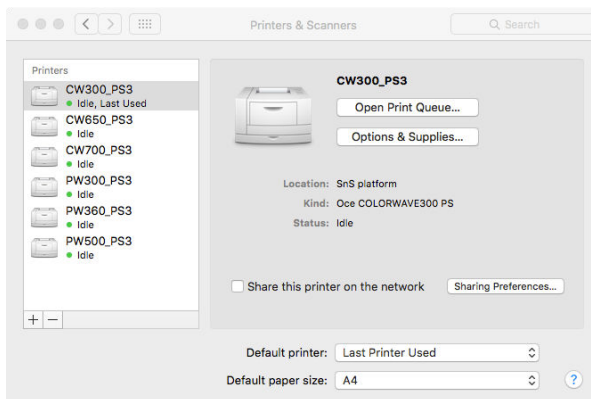
Procedure

1. From the desktop lower bar, click the 'System Preferences' icon.



[1] 'System Preferences' icon

2. Open the 'Printers & Scanners' window.
3. Make sure that the current configuration is not locked and click the 'Plus' sign [+] to add a new printer.



[2] Add a new printer



NOTE

If the configuration is locked, contact your System Administrator.

The printer configuration window opens.

4. From the top menu, select the 'IP' icon.
5. For the Protocol value, select 'Line Printer Daemon – LPD'.
6. Fill in the other fields with the following information:
 - the printer IP Address
 - a Queue name



IMPORTANT

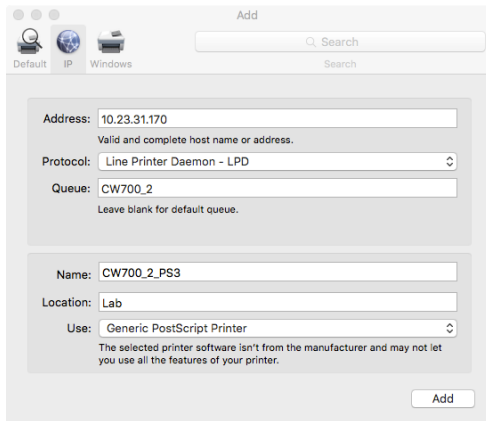
Unlike what is indicated on the printer configuration window, you must fill in the 'Queue' text field with a non blank value.

- a printer Name
- a Location, if needed. This optional setting enables to geographically identify your printer location.



NOTE

Contact your System Administrator to know those printer details, if needed.



[3] Printer configuration

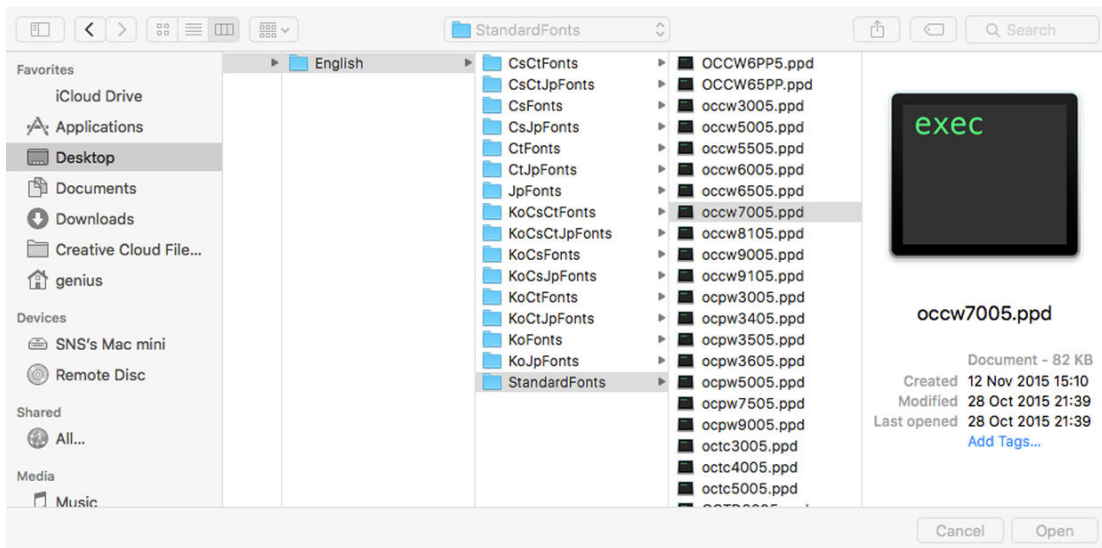
7. In the 'Use' field, select 'Other...':

Browse the 'MacOS_X' folder to find the appropriate printer PPD (this folder is created after you un-zip the content downloaded from the web).

Select the language and the possible additional set of fonts you need for your printer.

In our example, we select the 'English' language, with 'StandardFonts' (no need to print Asian characters).

([Understand the Asian fonts on page 14](#))



[4] Select the .PPD file of the printer

8. Select the .ppd file that corresponds to your printer and click 'Open':

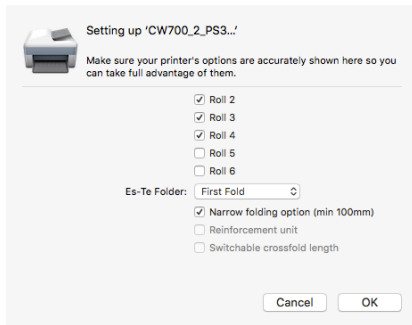
([Understand the .PPD file name on page 15](#))

The 'Use' field is now filled with the correct printer type.

9. Click 'Add' to validate the printer configuration.

A new window opens.

10. Declare the options available on your printer and click 'Ok'.



[5] Configure installable options

Result

The printer is added to the printer list.



NOTE

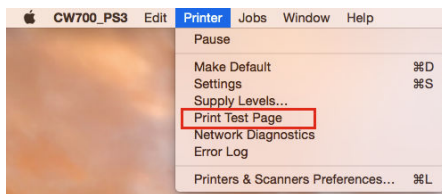
You can change the declaration for installable options. To change the options installed on the printer, go to 'Printers & Scanners' window, select the printer and click [Options & Supplies]→[Options].

To make sure the installation of the new printer is correct, you can print a test page.

Print a test page from Mac OS X 10.10 and higher

Procedure

1. Open the 'Printers & Scanners' window.
 2. Select the new printer in the left frame.
 3. Click 'Open Print Queue'.
- The printer queue opens. The Desktop top menus change accordingly.
4. From the Desktop top bar, open the 'Printer' menu and click 'Print Test Page'.



[6] Print a test page

Now, check the print-out from the printer.

Understand the Asian fonts

Introduction

If you installed Asian fonts on your printer controller, you need to install them on the printer driver as well.

If you do not need Asian fonts, then use the Standard fonts.



NOTE

The Korean fonts are not supported by the Océ TDS300 and Océ TDS400 printers.

Find the fonts you need

To install a specific set of fonts, you must select the correct 'Fonts' folder.

Abbreviation	Set of fonts
Cs	Simplified Chinese
Ct	Traditional Chinese
Jp	Japanese
Ko	Korean

The abbreviations can concatenate and form a new combination of fonts. For example, if you need to install both the Traditional Chinese and the Japanese fonts, open the 'CtJpFonts' folder.

Understand the .PPD file name

Introduction

'PPD' stands for 'Postscript Printer Description'. It is a file that describes the printer you add to your operating system.

In a Macintosh environment, you must select a .PPD file to install your printer.

.PPD files names

This table helps you associate the .PPD file name with the printer model it describes.

PPD name	Printer Model
occw3005.ppd	Océ ColorWave 300
occw5005.ppd	Océ ColorWave 500
occw5505.ppd	Océ ColorWave 550
occw6005.ppd	Océ ColorWave 600
occw6505.ppd	Océ ColorWave 650
OCCW6PP5.ppd	Océ ColorWave 600 Poster Printer (PP)
OCCW65PP5.ppd	Océ ColorWave 650 Poster Printer (PP)
occw7005.ppd	Océ ColorWave 700
occw8105.ppd	Océ ColorWave 810
Occw9005.ppd	Océ ColorWave 900
occw9105.ppd	Océ ColorWave 910
occw35005.ppd	Océ ColorWave 3500
occw37005.ppd	Océ ColorWave 3700
occw90005.ppd	Océ ColorWave 9000
ocpw3005.ppd	Océ PlotWave 300
ocpw3405.ppd	Océ PlotWave 340
ocpw3455.ppd	Océ PlotWave 345
ocpw3505.ppd	Océ PlotWave 350
ocpw3605.ppd	Océ PlotWave 360
ocpw3655.ppd	Océ PlotWave 365
ocpw4505.ppd	Océ PlotWave 450
Ocpw5005.ppd	Océ PlotWave 500
ocpw5505.ppd	Océ PlotWave 550
ocpw7505.ppd	Océ PlotWave 750
ocpw9005.ppd	Océ PlotWave 900
octc3005.ppd	Océ TCS 300
octc4005.ppd	Océ TCS 400

Understand the .PPD file name

PPD name	Printer Model
octc5005.ppd	Océ TCS 500
OCTD3005.ppd	Océ TDS 300
octd3205.ppd	Océ TDS 320
OCTD4005.ppd	Océ TDS 400
octd4505.ppd	Océ TDS 450
OCTD6005.ppd	Océ TDS 600
octd7005.ppd	Océ TDS 700
octd7505.ppd	Océ TDS750
OCTD8005.ppd	Océ TDS 800
OCTD8605.ppd	Océ TDS 860 (Océ TDS 800 Pro Series)

Configure the Océ printer from the CUPS interface

Before you begin

The CUPS web server interface must be enabled on your workstation.

See: [Enable the CUPS web interface \(Mac OS X 10.5 and higher\)](#) on page 20

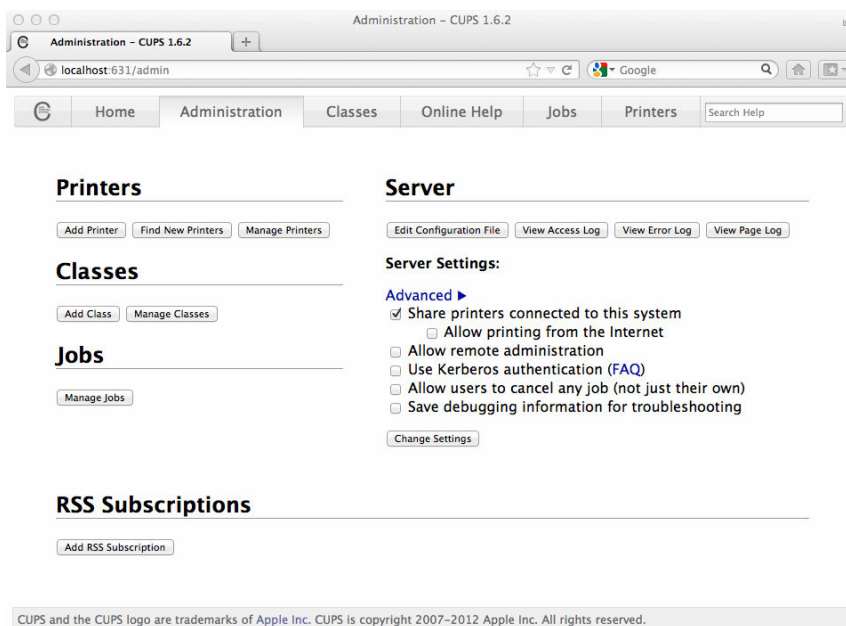
When to do

From the CUPS web interface, you can:

- configure the options of your printer.
- define the default value for your print settings.
- see your print queue.

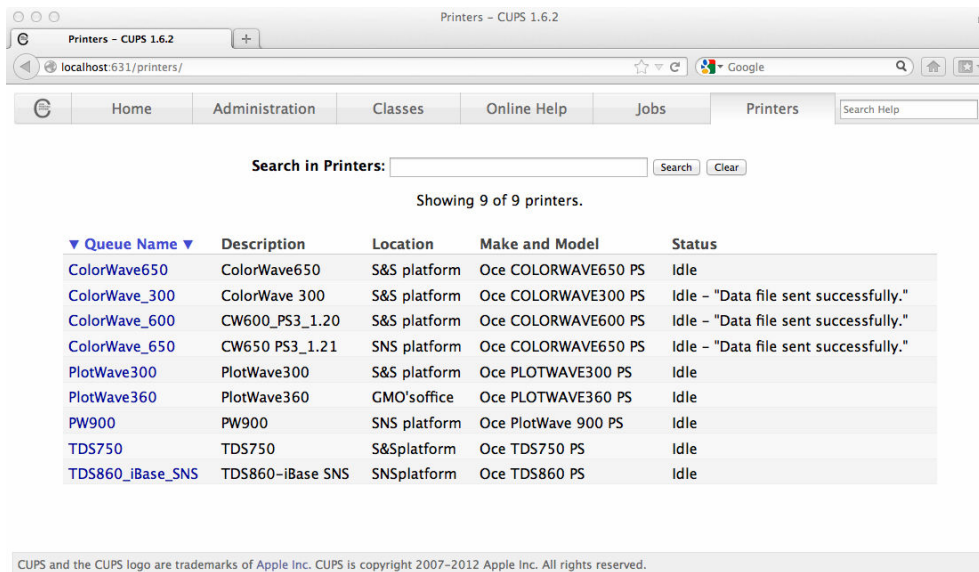
Procedure

1. Open your web browser.
2. Enter the next URL: `http://localhost:631/admin`.
The next window opens.

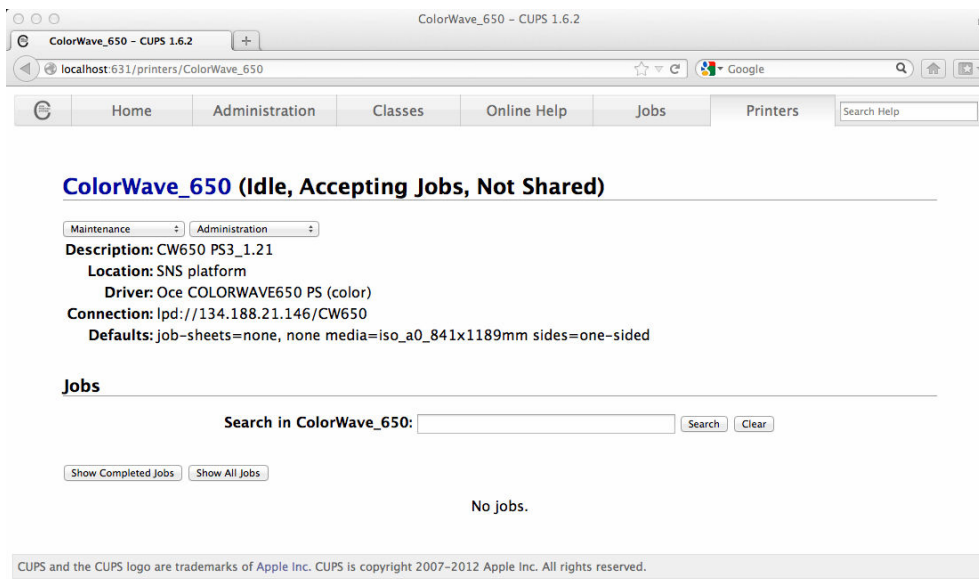


3. Open the 'Printers' tab.
The list of your printers opens.

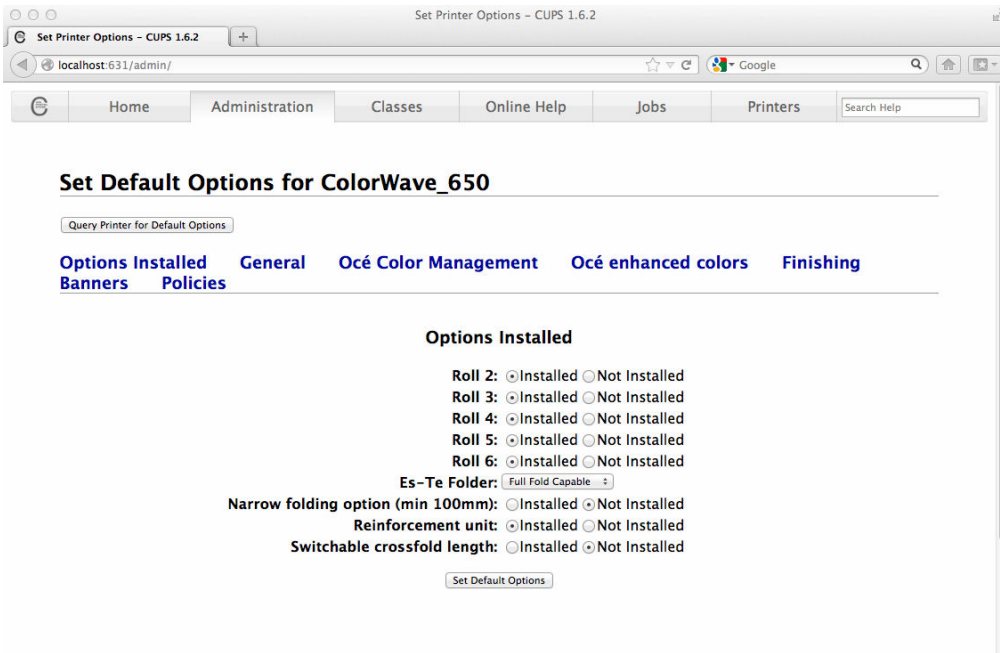
Configure the Océ printer from the CUPS interface



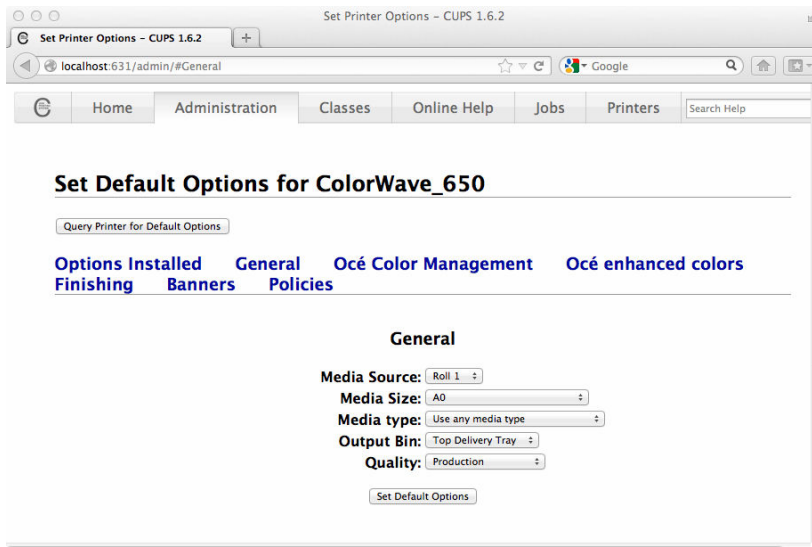
4. Select the printer you want to configure.
A new window opens with the description of the selected printer.



5. On this new window, below the printer's name, there are 2 drop-down menus. From the 'Administration' drop-down menu (located on the right), select 'Set Default Options'.
A new window opens with the list of the 'Options Installed'.



6. Define or verify the options configured with your print system. Click 'Set Default Options' to validate any modification.
7. Open the 'General' link. A new window opens with the list of the general print settings available for your printer.



8. Define or verify the default value for your print settings. Click 'Set Default Options' to validate any modification.
9. Navigate through the other links in order to define additional print settings, available according to your print system. Click 'Set Default Options' to validate any modification to your printer configuration.

Enable the CUPS web interface

When to do

You tried to open the CUPS web interface but you got the error message 'Server internal error' and a request to start the web interface. The next procedure describes how to start the CUPS web interface.

Before you begin

You need the Administrator rights on the workstation.

Procedure

1. Open a Terminal window.
2. Enter the next command line: `sudo cupsctl WebInterface=yes`
3. Press the <Enter> key on the keyboard to validate.
4. Close the Terminal window.
5. From your web browser, enter the next URL: `http://localhost:631/admin`.
The CUPS web interface opens.

Chapter 3

Install Océ PS3 driver on Windows platforms

Install Océ PS3 driver on Windows platforms

Introduction

You can install the driver on workstations running under:

- The following platforms: Windows 7, Windows 8, Windows 8.1 and Windows 10 (x32 or x64).
- The following servers: Windows Server 2008 R2, Windows SBS 2011, Windows Server 2012, Windows Server 2012 R2, and Windows Server 2016.

On Windows platforms, the PS3 printer driver is compatible with the Novell iPrint and NDPS environments (Novell OES 11 SP2 / SLES 11 SP3; with iManager 2.7.7 and iPrint client up to 5.99 versions).



NOTE

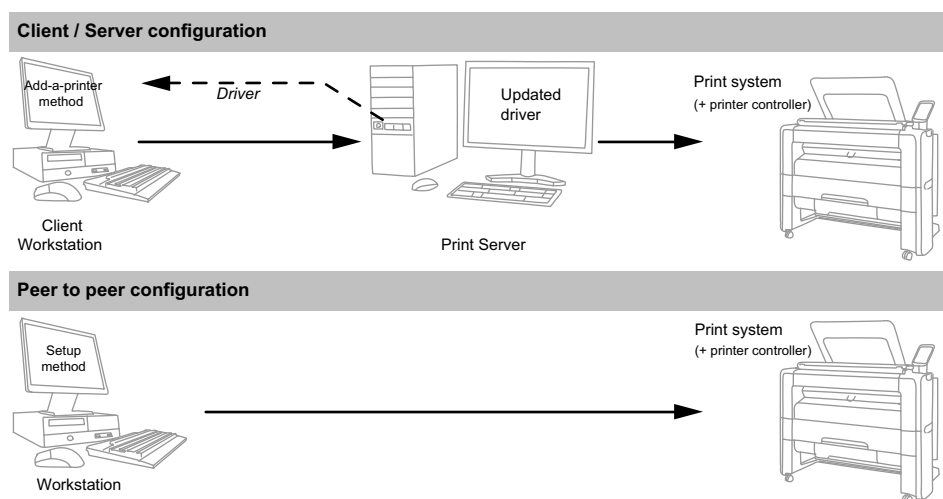
To install the driver under a Windows platform, you need the System Administrator rights on your computer.



NOTE

To get the installation process on a Print server, consult the Océ Connectivity Manual (Océ LF Systems Connectivity Manual for Windows). It is available on the Océ Downloads website, from the downloads page related to your printer model: "<http://downloads.oce.com>".

Illustration



Define the correct installation method

According to your network architecture, you can use different methods to install the Océ PS3 driver on a workstation. Océ recommends you use:

- The **'Add (a) printer'** method in a Client/Server configuration, for the client workstation.
- The **'Setup'** method when the workstation is directly connected to the printer (peer to peer configuration, or print server of a Client/Server configuration).



NOTE

Contact your local network administrator to know your network configuration and to get information about the printer to address (you can refer to the Océ Connectivity Manual for more detailed explanations).

Caution concerning printer names

If you are installing the PS3 printer driver on a Windows platform:

- The printer name may include up to a maximum of 220 characters.
- Do not use special characters ('!', ',', '^').

Install the driver using the 'Setup' method

Retrieve the installation files

Introduction

Download the Océ Printer Driver for Adobe Postscript 3 setup.exe file. Then, install the driver.



NOTE

Make sure you have the System Administrator rights on your computer.

Procedure

1. Open the Océ Downloads website (["http://downloads.oce.com"](http://downloads.oce.com)).
2. Select your printer and click 'Show downloads'.



NOTE

You can also go directly to the 'Drivers & Software' page of the printer driver: ["http://downloads.oce.com/ProductDownloads/Index/423"](http://downloads.oce.com/ProductDownloads/Index/423)

3. Select 'Drivers' from the 'Type' list.
Then select your 'Operating System' and your 'Language'.



NOTE

The language you select is the one of the printer driver.

4. Follow the download and retrieval 'Info' to download the latest version of Océ Adobe® PostScript® 3™ Driver.
5. A compressed self-extracting file is downloaded on your local directory.
Double-click on it to unzip the content. It contains the installation files.
6. Go to the directory where you extracted the installation files.

Install the driver using the 'Setup' method (recommended)

Introduction

The installation procedure applies to all supported Windows operating systems.



NOTE

Make sure you have the System Administrator rights on your computer.

Procedure

1. Launch the installation (double-click on the application setup.exe).
If asked, choose the setup language and click [Next].
2. Read the license agreement and click [Yes].
3. Choose the driver language and click [Next].
4. The Océ Connect Assistant detects your printer model.

If	Then
several printers are detected,	select your printer model from the list. Click [Next].
no printer is detected,	click [My printer is not detected]. Type the hostname or IP address of your printer. Click [Next].

5. The Océ Connect Assistant defines the print port associated with your printer.
Click [Next] to validate, or contact your local system administrator to change it.
6. If you need to install Asian fonts, click the [Asian Fonts] button.
Select the set of fonts to install and click [OK]. ([Understand the Asian fonts on page 14](#))



NOTE

If the [Asian Fonts] button is not available, it means your printer does not support those fonts.



NOTE

When the check boxes are already selected, the selection has been retrieved from your printer controller.

7. Type a name for the new printer (see [Caution concerning printer names on page 23](#)).
8. Indicate if you want to use the printer as the default one.
Indicate if you want to print a test page.
Click [Next].
9. Do not share the printer as you are installing it on a workstation.
Click [Next] and [Finish].

Install the driver using the 'Add a printer' method

When to do

If you are in a **Client/Server network configuration**, and **only** in this configuration, Océ recommends you install the PS3 driver on the workstation using the 'Add (a) printer' method.

In this case, the version of the driver installed on the workstation is the same as the one on the print server (contact your system administrator to make sure that the latest version of the driver is installed on the print server).

Procedure

1. From the 'Start/Settings' menu, open the 'Printer and faxes' window.
2. Double-click 'Add a Printer' to launch the installation wizard.
3. Click 'Next'.
4. Choose to set up a network printer and click 'Next'.
5. Select 'Connect to this printer' and either:
 - enter the name of the printer, provided by your local network administrator.
 - or click 'Next' to browse for the print server and select the printer queue.
6. Click 'Next'.
7. Indicate whether you want to use the printer as the default one and click 'Next'.
8. Click 'Finish'.

Install the driver using the 'Add a printer' wizard (Windows 7)

Procedure

1. From the 'Start' menu, open the '(Devices and) Printers' window.
2. Click 'Add a Printer' to launch the installation wizard.
3. Click 'Add a network, wireless or Bluetooth printer'.
4. Select 'The printer I want isn't listed'.
5. Select 'Select a shared printer by name'.
6. Click 'Browse...' to browse to the network printer.
7. Select the name of your printer and click 'Select'.
8. Click 'Next' twice.
9. Click 'Finish'.

Result

Open the printer page of your workstation. Check for the presence of your new printer in the list.

Install the driver using the 'Add a printer' wizard (Windows 8 / 8.1 / 10 and Windows Server 2012 R2 / 2016)

Procedure

1. Open the 'Devices and Printers' window.



NOTE

From the Start screen, right-click in the bottom left corner. Select 'Control Panel'. Then, click on 'Device and Printers'.

2. Click 'Add a Printer' to launch the installation wizard.
3. Select 'The printer that I want isn't listed'.
4. Select 'Select a shared printer by name'.
5. Click 'Browse...' to browse to the network printer.
6. Select the name of your printer and click 'Select'.
It is possible that warning pop-up windows appear. If requested, indicate that:
 - you trust the driver and,
 - you allow the related modification(s) on your workstation.
7. Click 'Next' twice.



NOTE

Indicate whether you want to:

- define the printer as your default printer.
- print a test page.

8. Click 'Finish'.

Result

Open the printer page of your workstation. Check for the presence of your new printer in the list.

Configure the Océ Printer

Introduction

Océ printer use feeders (rolls, sheet feeders) and finishers (folder, output destinations).

You must declare and configure those printer options in the printer driver ([Device settings] tab).

When to do

After the installation of the printer driver.

Before you begin

Make sure you have the System Administrator rights on your computer.

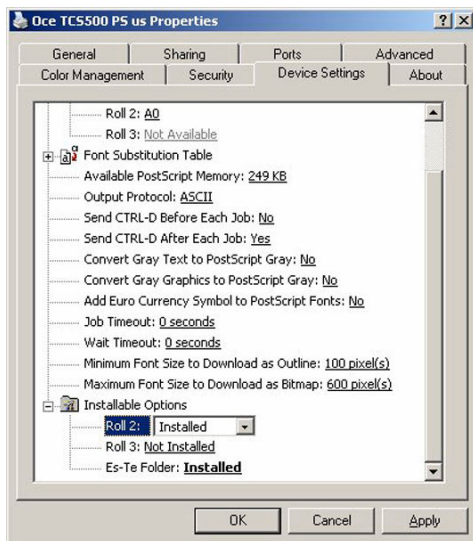


NOTE

If you installed the printer driver using a Client/Server network configuration ([Add (a) printer] method), you cannot configure the printer options.

Procedure

1. Open the printers window of your workstation.
2. Right click on the printer you want to configure and select 'Printer properties'.
3. Select the [Device settings] tab.
4. In the 'Installable Options', declare the printer options available on your printer.



5. Click 'Apply' to confirm your choices.



NOTE

When a conflict exists between the printer options, a warning icon appears next to the conflicting option. If you click 'Apply', a warning message offers you to resolve the conflict.

6. Click [OK] to validate.

Result

The feeders and finishers are installed on this printer.



NOTE

If you accept to automatically resolve a conflict between printer options, the system makes changes.

Make sure those changes correspond to the action you wanted to perform.

Chapter 4

Uninstall Océ PS3

Uninstall on Macintosh OS X 10.10 and higher

Procedure

1. From the desktop lower bar, click the 'System Preferences' icon.



[7] 'System Preferences' icon

2. Open the 'Printers & Scanners' window.
3. Select the printer associated with the driver.
4. Click the "Minus" sign [-] at the bottom of the printers list.
5. Click 'OK' to validate.

Uninstall the driver (Windows operating system)

Before you begin

To remove the driver from a Windows platform, you need the System Administrator rights on your computer.



NOTE

The procedure below is a generic un-installation procedure. It is always valid, whatever the installation method you used.

Procedure

1. [The Uninstall shortcut is available from the Start menu or from the Start screen.]

Operating System	Action
<ul style="list-style-type: none"> • Windows 7 • Windows SBS 2011 	From the Windows 'Start' menu, select Programs - Océ - Océ PS3 - Océ PS3-Uninstall.
<ul style="list-style-type: none"> • Windows 8 / 8.1 • Windows Server 2012 (R2) • Windows 10 • Windows Server 2016 	<ol style="list-style-type: none"> 1. From the 'Start' screen, right-click on the Océ PS3-Uninstall tile. 2. Select 'Run as administrator'.

2. Select the printer(s) to uninstall.
3. Click [Next] and [Finish].



NOTE

You can still use the traditional un-installation procedures.

- After a **'Add a printer' installation**, from the printer list of your workstation, right-click your printer and select 'Remove (device)'.



NOTE

With the more recent Windows Operating Systems, 'Remove device' may be located in the menu bar.

- After a **setup installation**, from the 'Add/Remove programs' of your Control Panel, select 'Océ PS3' and choose 'Uninstall'.

Index

C

Configuration
Printer configuration..... 11, 28

D

Description..... 7
Device settings.....28
Download
Instructions..... 10, 24

I

Installable options..... 13
Windows OS.....28
Installation.....24
Add-a-printer method..... 22, 26
Mac OS.....10
Setup method.....22
Windows OS.....22

P

PPD file..... 12, 15
Download.....10
Printer configuration
Mac OS.....11
Windows OS.....28
Printer name..... 23
Printers compatibility.....7

U

Uninstallation
Mac OS.....32
Shortcut..... 33
Windows OS.....33

W

Website.....6
downloads..... 6
URL.....6
Windows OS
Compatibility.....22
Workflow..... 7

Canon

Canon Inc.

www.canon.com

Canon U.S.A., Inc.

www.usa.canon.com

Canon Canada Inc.

www.canon.ca

Canon Europe Ltd

www.canon-europe.com

Canon Latin America Inc.

www.cla.canon.com

Océ Australia Pty Ltd

www.oce.com.au

Canon China Co., Ltd

www.canon.com.cn

Canon Singapore Pte. Ltd

www.canon.com.sg

Canon Hongkong Co., Ltd

www.canon.com.hk